



Vertical Double Suction Volute Pump

Type VDM

Bore Size : 600~1000mm
(24~40 in.)

APPLICATIONS

- **Water Works**
Water intake / water supply / booster
- **Industrial use**
Water intake / water supply / booster /
water circulation / drainage / sea water
desalination / chemical / refinery / fire fighting
- **Irrigation**
Water supply / drainage
- **Building**
Water supply / drainage / air conditioning
- **Pipe line**
Water & crude oil transfer / booster

APPLICATION RANGE

- Capacity : Approx. 35 ~ 250m³ / min (9200 ~ 66000 USGPM)
- Total head : Approx. 7 ~ 190m (23 ~ 620 ft)
- Liquid : Fresh water / industries / river water /
sea water / brine / paper stock hydrocarbon etc.

FEATURES

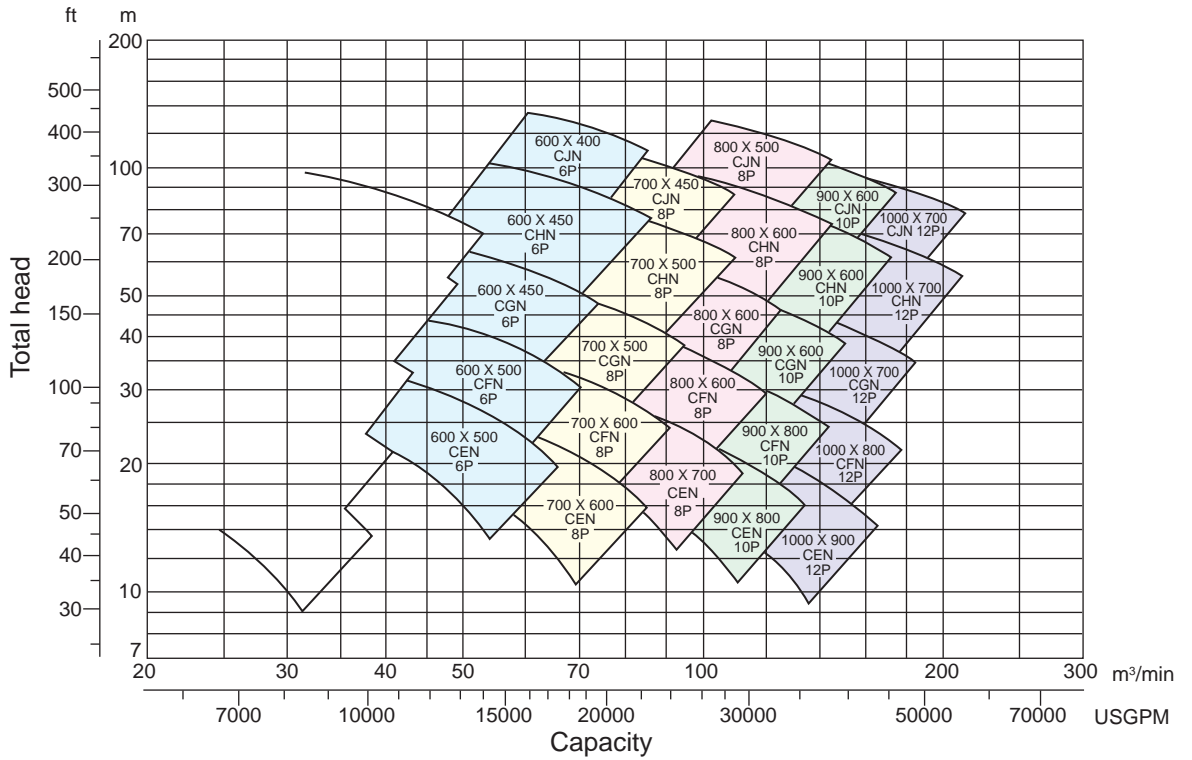
- **Easy Maintenance**
Split case design permits easy inspection and disassembly works as removal of suction / discharge pipe work not required should maintenance work is deemed necessary.
- **Optimal Pump Performance**
Advanced double suction design with good suction performance ensures high suction lifts even during large capacities operation.
- **Energy Saving**
Higher pump operating efficiency over a wide range of capacities reduce motor output, thus reducing operating cost.
- **Space Saving**
Vertical mounting enhance space saving. Pump operating with low noise, smaller pressure pulsation enhance operating environment.
- **Wide Materials Choice**
Offers wide choices of variable combination of materials to suit most pumping application.



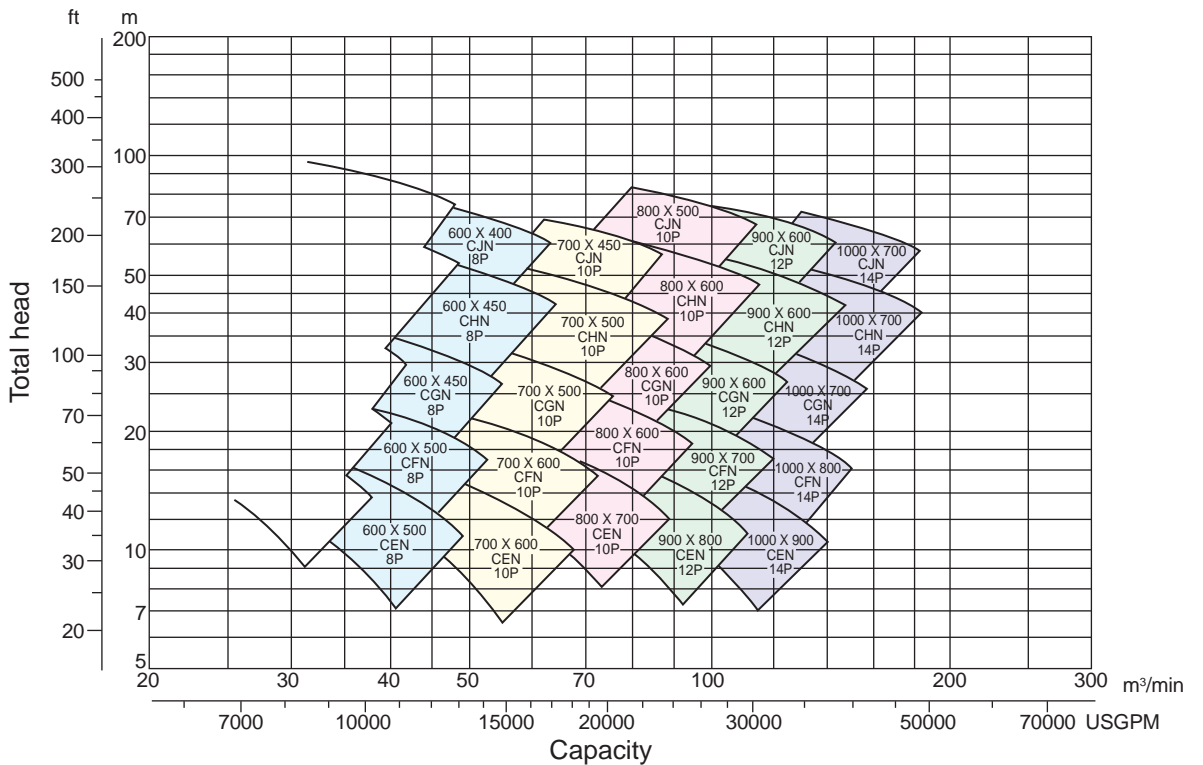
PERFORMANCE CHART

Bore 600 ~ 1000 mm (50Hz)

High speed



Low speed



Pump Speed (50Hz)

Motor Pole	4P	6P	8P	10P
Speed(min-1)	1450	950	700	550

(NOTE) ◦ Pump rating not in the chart are also available.

SPECIFICATIONS

	STANDARD	OPTIONAL
Liquid temperature	Below 80°C (176°F)	81 ~ 120°C (117 ~ 248°F)
Shaft seal	Mech. seal	Gland packing
Direction of rotation	CW (viewed from driver)	CCW
Flange	JIS 10K / JIS 20K	Any standard
Suc. / Disch. direction	Side-side	Other direction such as bottom suction
Drive method	Motor direct drive	Diesel engine drive, Turbine drive through gear, etc.
Accessories	Common base, foundation bolts, shaft coupling, air vent piping, self sealing water piping, drain piping	Pump base, pressure gauge, compound gauge, vaccum gauge, priming detector, solenoid valve for priming line, pressure switch, bearing thermometer, bearing dial thermometer with an alarm contact, tools, companion flange, etc.

Note : Other specifications can be available, if required.

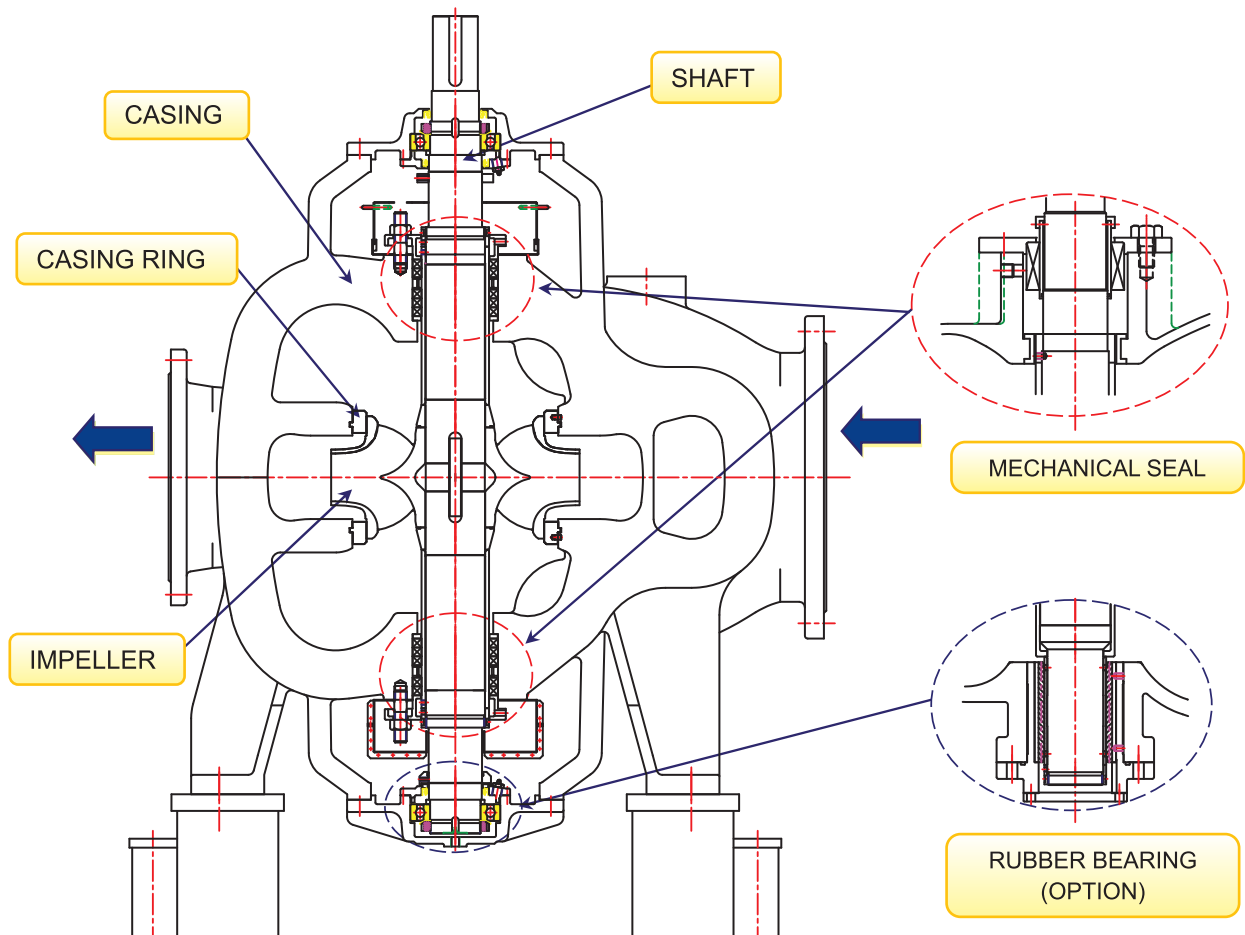
MATERIALS

Typical Material Combinations

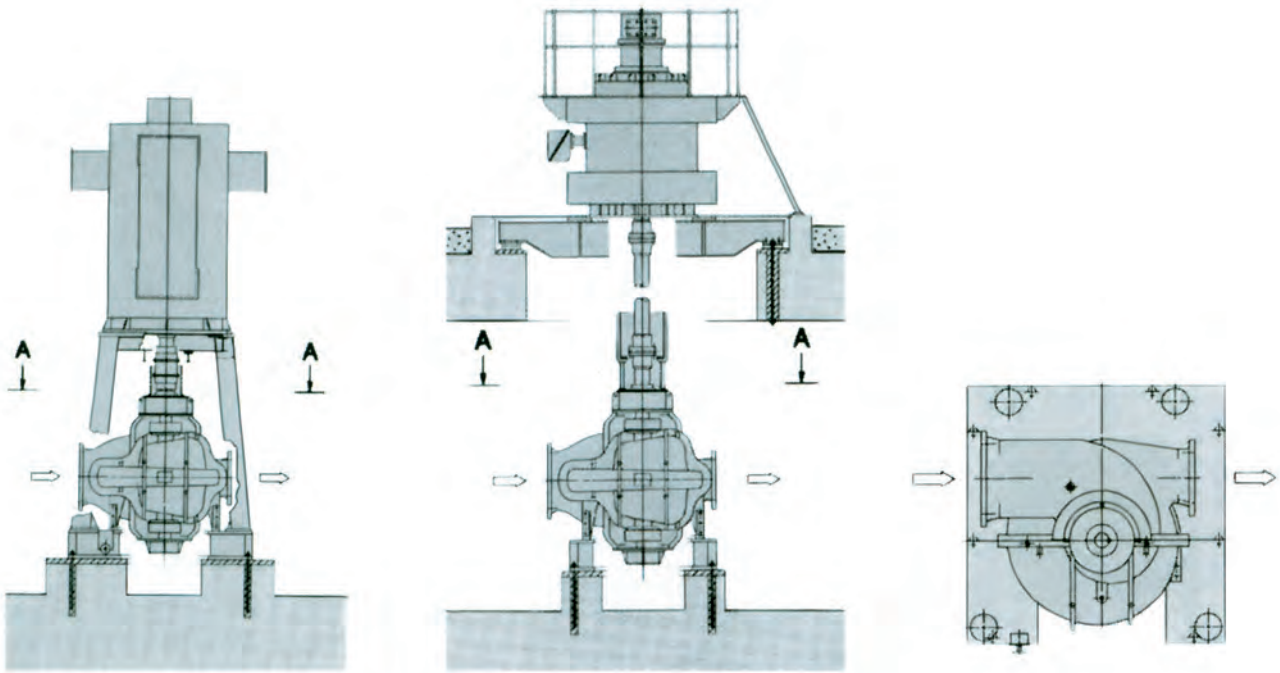
	Fresh Water / River Water / Industries	Sea Water	Hydrocarbon
Casing	Cast Iron	Low Alloy Cast Iron / Ni-resist D2 / 316S.S.	Cast Steel
Impeller	Cast iron / Bronze / Stainless steel	316S.S.	410S.S.
Shaft	Carbon Steel / 4140 Steel	316S.S.	Carbon Steel / 4140 Steel
Packing Sleeve	Stainless steel	316S.S.	420S.S.
Casing Ring	Cast Iron / Bronze / Stainless steel	316S.S.	403S.S.

Note : • Other materials such as Nickel aluminium bronze, Duplex stainless steel, Monel, Alloy 20, etc. can also be applied.
 • Selection of material requires careful study of the properties of the liquid handled and of the operating conditions, etc.
 For specific details, please consult our factory.

SECTIONAL VIEW



TYPICAL INSTALLATION



One Floor

Two Floor Type

View From A-A



Typical installation of VDM pump with vertical shafting.

* Dimensional details are provided for reference only.
 * All specifications are subject to change without prior notice.



EBARA Pumps Malaysia Sdn Bhd
 6, Jalan TP3, UEP Subang Jaya Industrial Park,
 47620 Subang Jaya, Selangor, Malaysia.
 Tel : 03-8023 6622 Fax : 03-8023 9355
 Email : sales@ebara.com.my
 Website : www.ebara.com.my



Certificate No. KLR 0500080
 Certificate No. KLR 6027651

Authorised dealer: