



EBARA Ejector System

Type EJECTOR

APPLICATIONS

EBARA Ejector system uses EBARA dry pit pumps with one or more collector tanks mounted on a common skid consisting of valves and manifolds.

Custom designed electrical control panel is utilised and built to highest standard, interconnected with pump motor and control devices to ensure automatic trouble-free operation.

FEATURES

- **Pumps**

- Non-clog, single channel impeller that permits 76mm (3") spherical passage; prevents clogging; high efficiency and saves energy.
- Robust construction - large diameter, short overhang shaft with stainless steel fasteners.
- Double mechanical seals - hard faced upper and lower seals operate in an oil bath; providing longer service life and lower maintenance costs.
- Air-filled, Class F insulated, heavy duty motor, come with cooling jacket that enhance operating life of pump.

- **Tank**

Customised design stainless steel collector tank.

- **Electrical Control Panel**

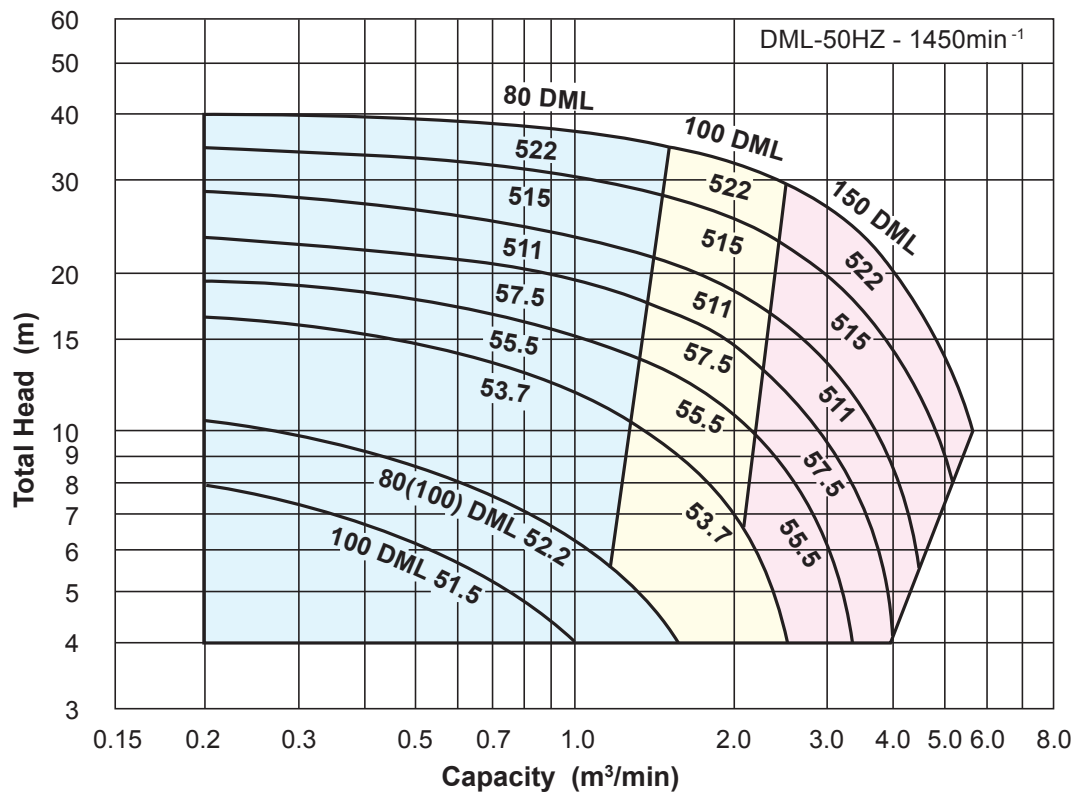
Corrosion-resistance epoxy coated control panel incorporated with quality electrical / electronic components built to EBARA's quality standard.

- **Accessories**

Approved float switches, valves and fittings are selected and used to enhance operating efficiency and assure durability.

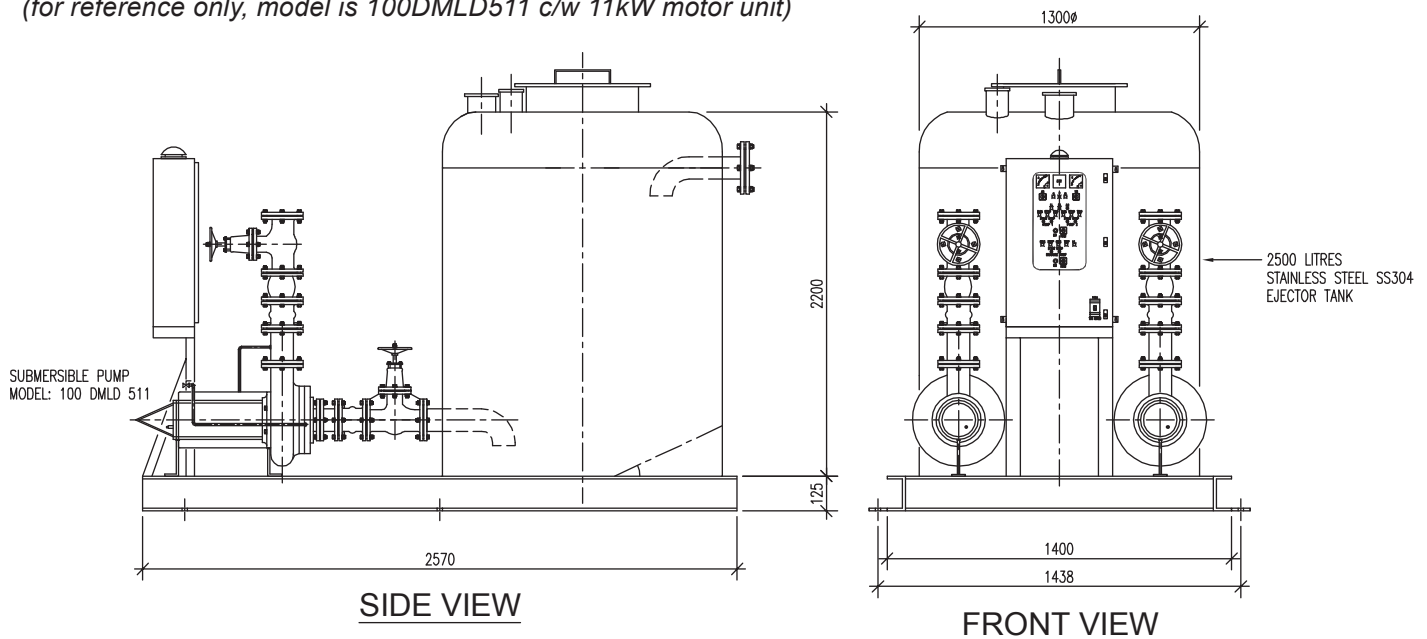


PERFORMANCE CHART



TYPICAL DIMENSIONAL DRAWING

(for reference only, model is 100DMLD511 c/w 11kW motor unit)



* Dimensional details are provided for reference only.

* All specifications are subject to change without prior notice. * Please contact EBARA for details.



EBARA Pumps Malaysia Sdn Bhd
 6, Jalan TP3, UEP Subang Jaya Industrial Park,
 47620 Subang Jaya, Selangor, Malaysia.
 Tel : 03-8023 6622 Fax : 03-8023 9355
 Email : sales@ebara.com.my
 Website : www.ebara.com.my



Approval No.0048594
 Approval No.0049022

Authorised dealer: