



Close-coupled Centrifugal Pump

Type PFM

APPLICATIONS

- Residential
- Agriculture & domestic use
- General water pumping
- Light industrial usage

Single stage Centrifugal Pump

- Close coupled
- Single-phase motor with better heat dissipation through specially designed cooling fins
- Single-phase 2-pole motor for standard 240V, 50Hz power supply
- Nozzles with BSP thread, Suction 1 ½", 2" & 3" x Discharge 1 ½", 2" & 3" used for clean water
- Maximum Flow: 60 m³/h
- Maximum Pressure: 20 m

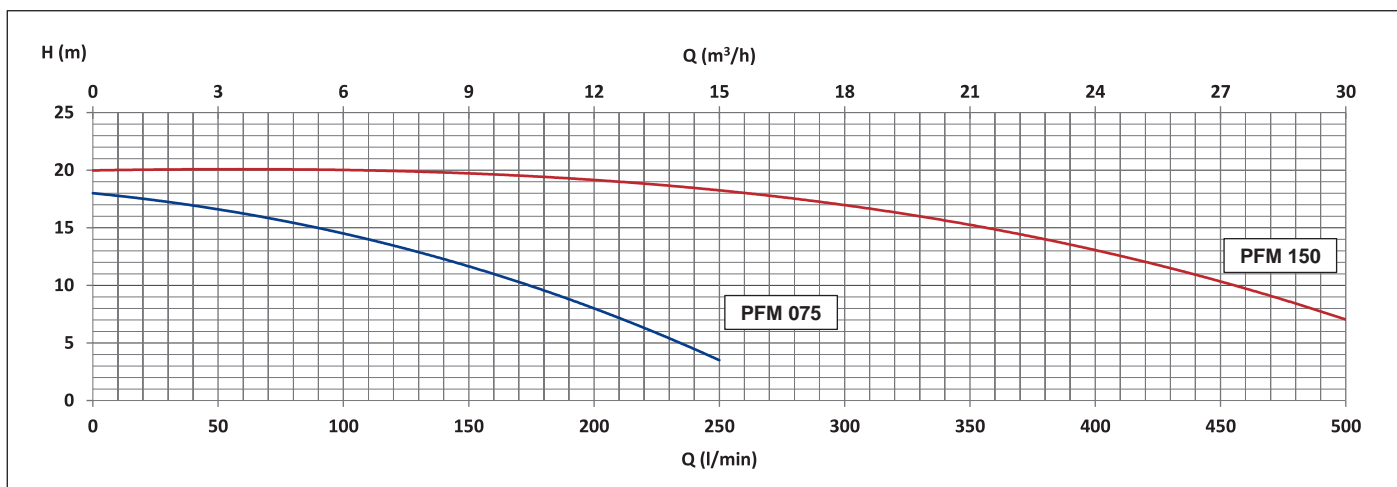
SPECIFICATIONS

- Cast Iron Casing
- Bronze impeller
- Stainless steel shaft end (prevents premature corrosion)
- Mechanical seal: Graphite and ceramic faces



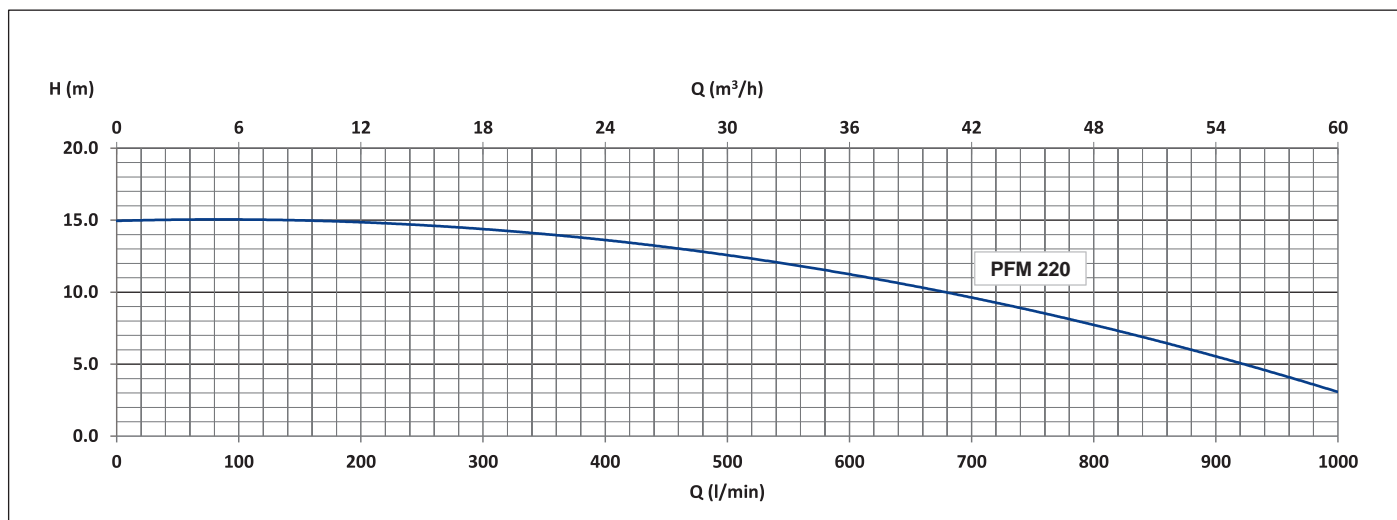
PERFORMANCE CHART

PFM 075 & PFM 150



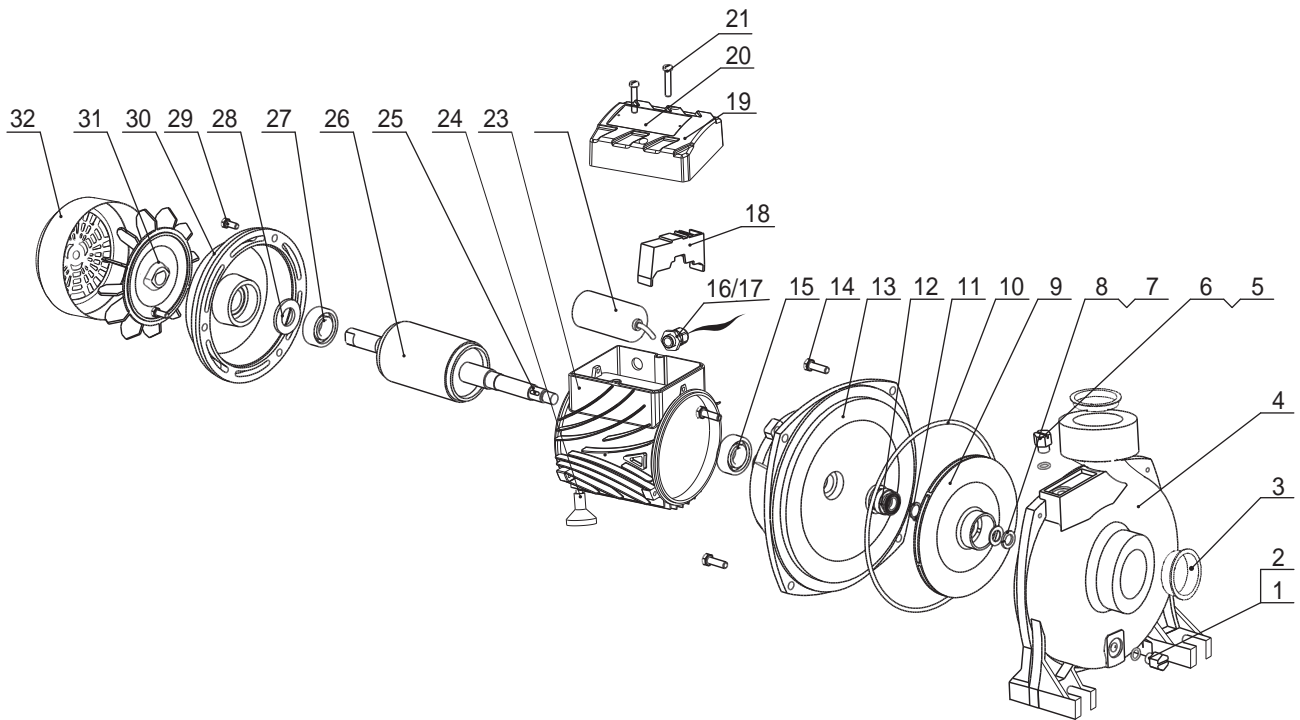
Pump Type	Power		Current A	Q = Capacity	Q = Capacity								
	kW	HP			l/min	0	100	200	250	300	350	400	500
					m³/h	0	6	12	15	18	21	24	30
Single-Phase 240V 50Hz					H = Total Head								
PFM 075	0.75	1.0	4.4	m	18	14.5	8.0	3.5					
PFM 150	1.5	2.0	9.0	m	20.0	19.9	19.4	18.2	16.8	15.2	13.2	7.0	

PFM 220



Pump Type	Power		Current A	Q = Capacity	Q = Capacity								
	kW	HP			l/min	0	300	400	500	700	800	900	1000
					m³/h	0	18	24	30	42	48	54	60
Single-Phase 240V 50Hz					H = Total Head								
PFM 220	2.2	3.0	9.5	m	15.0	14.1	13.8	12.6	10.0	7.5	5.2	3.3	

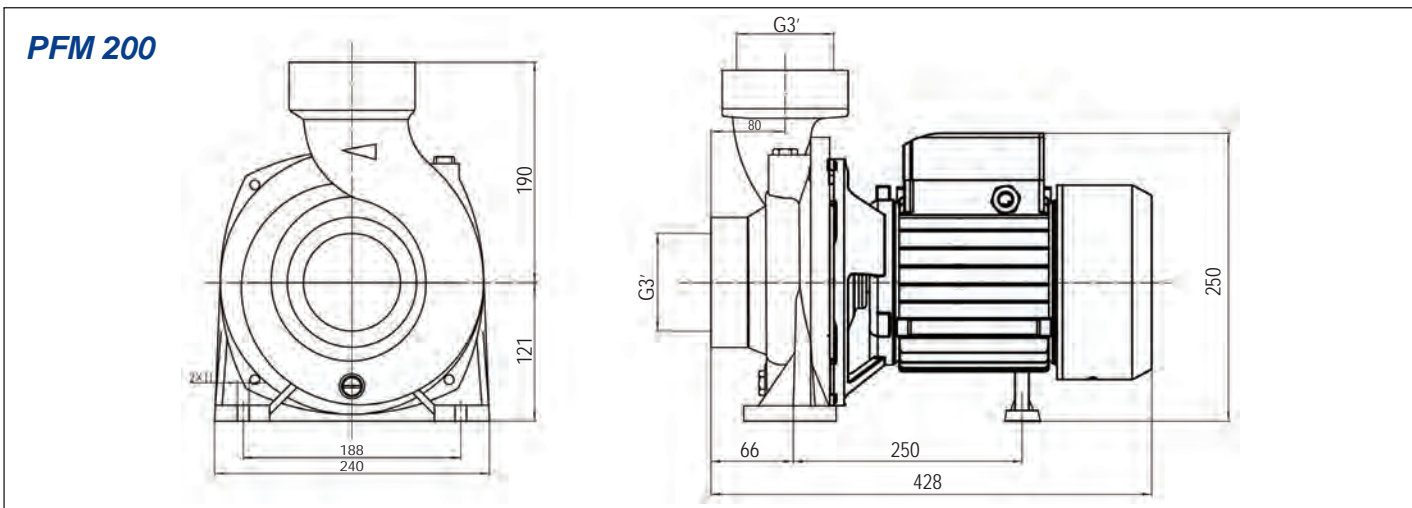
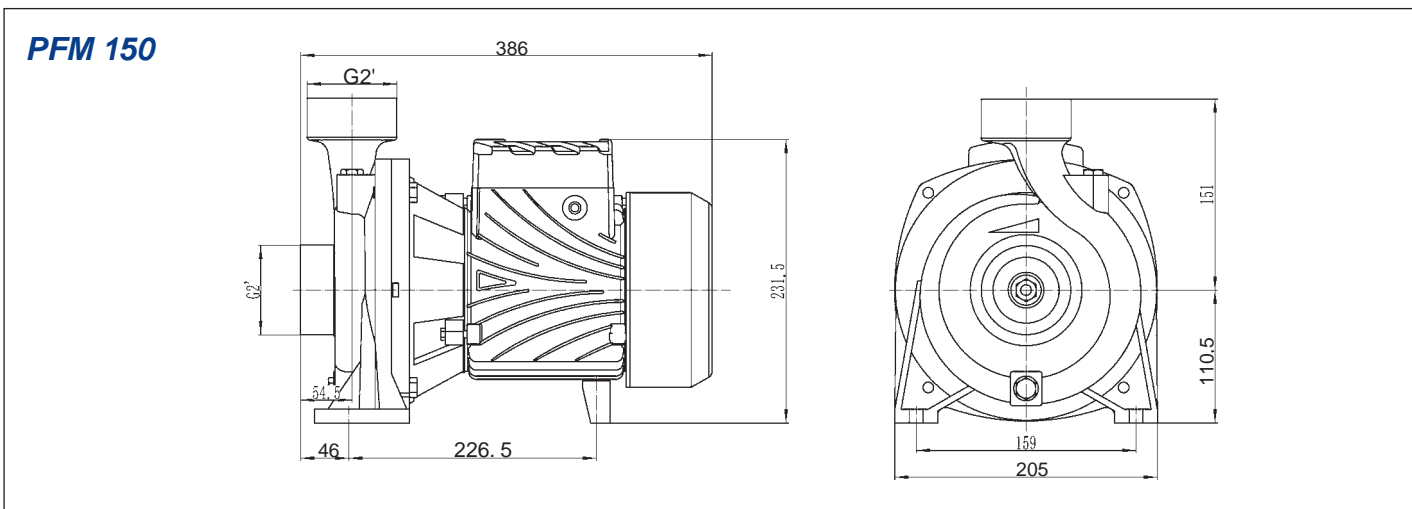
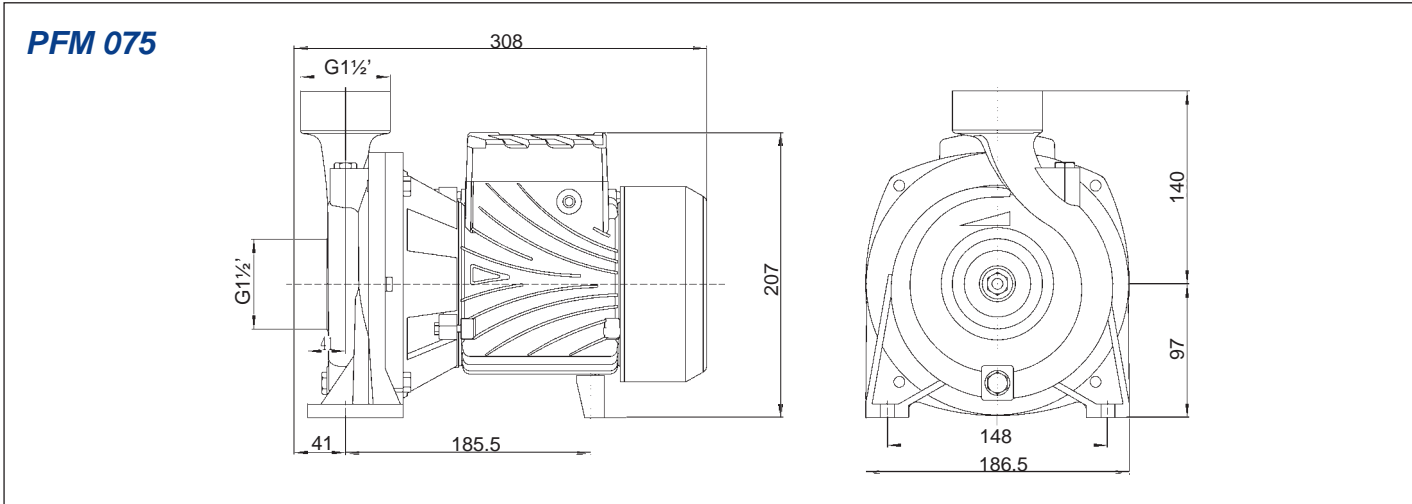
SECTIONAL VIEW



No.	Part Name	Material	Qty.
1	Filling plug	Cu	1
2	O-ring	NBR	1
3	Anti-dust cover	PE	2
4	Pump body	HT200	1
5	Filling plug	Cu	1
6	O-ring	NBR	1
7	Screw	304	1
8	Spring washer	304	1
9	Impeller	Cu	1
10	O-ring	NBR	1
11	Circlip	304	1
12	Mechanical seal	Unit	1
13	Pump connection	HT200	1
14	Screw	Q235A	4
15	Bearing	Unit	2
16	Cable outlet	Unit	1

No.	Part Name	Material	Qty.
17	Cable	Unit	1
18	Terminal block	Unit	1
19	Capacitor box	ABS	1
20	Nameplate	ZL102	1
21	Screw	Q235A	2
22	Capacitor	Unit	1
23	Motor casing	ZL102	1
24	Foot	Unit	1
25	Flat key	304	1
26	Stator	Unit	1
27	Bearing	Unit	2
28	Spring wave	65Mn	1
29	Screw	Q235A	3
30	End cover	ZL102	1
31	Fan	PPDT10	1
32	Fan cover	Q235A	1

DIMENSION



* Dimensional details are provided for reference only.
 * All specifications are subject to change without prior notice.



EBARA Pumps Malaysia Sdn Bhd
 6, Jalan TP3, UEP Subang Jaya Industrial Park,
 47620 Subang Jaya, Selangor, Malaysia.
 Tel : 03-8023 6622 Fax : 03-8023 9355
 Email : sales.epm@ebara.com
 Website : www.ebara.com.my



Authorised dealer: