



End Suction Volute Pump

Type FSC

APPLICATIONS

- Pressure boosting
- Heating systems
- Agricultural
- Drainage
- fountain
- flood control basin
- Air-conditioning
- Industrial

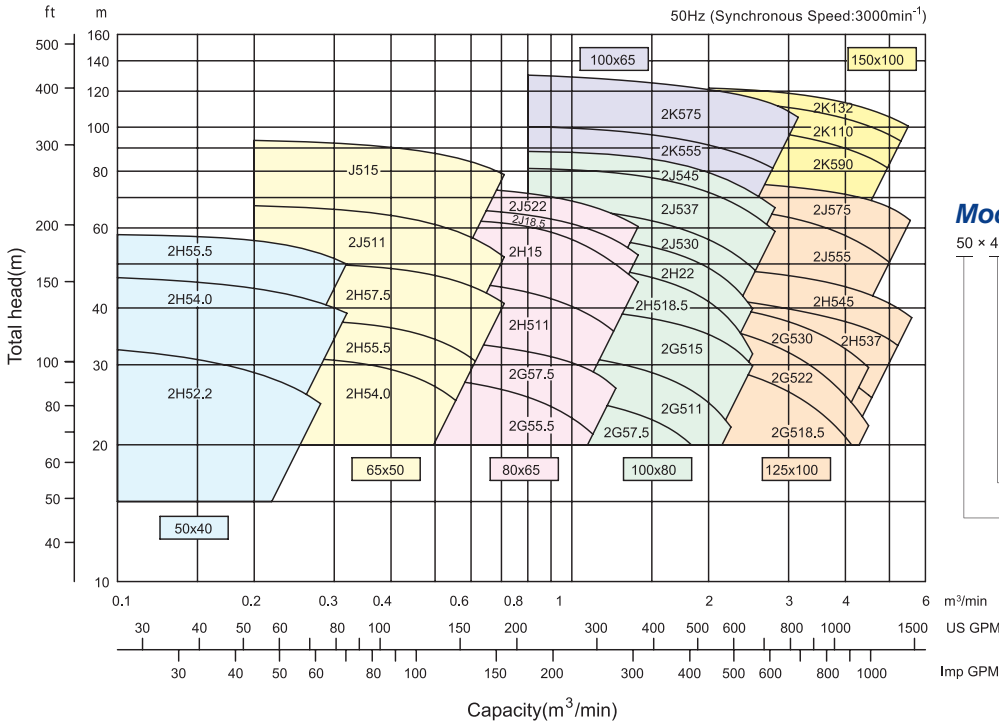
FEATURES

- Easy maintenance B.P.O (Back Pull Out) feature allows all rotating element to be removed without disconnecting the suction and discharge pipe work.
- Higher operating efficiency over a wider range of capacities, lowers operational cost.
- Non-overload design to ensure stable performance for all applications.
- Wide range application with flow capacity up to 22 m³/min.
- Higher working pressure up to 16 Bar.

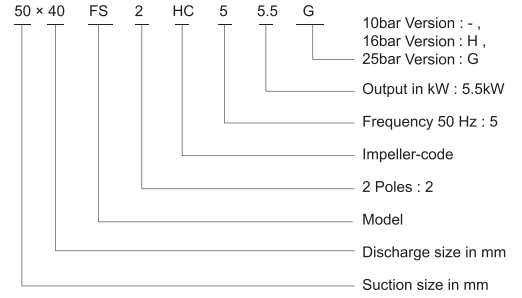


PERFORMANCE CHART

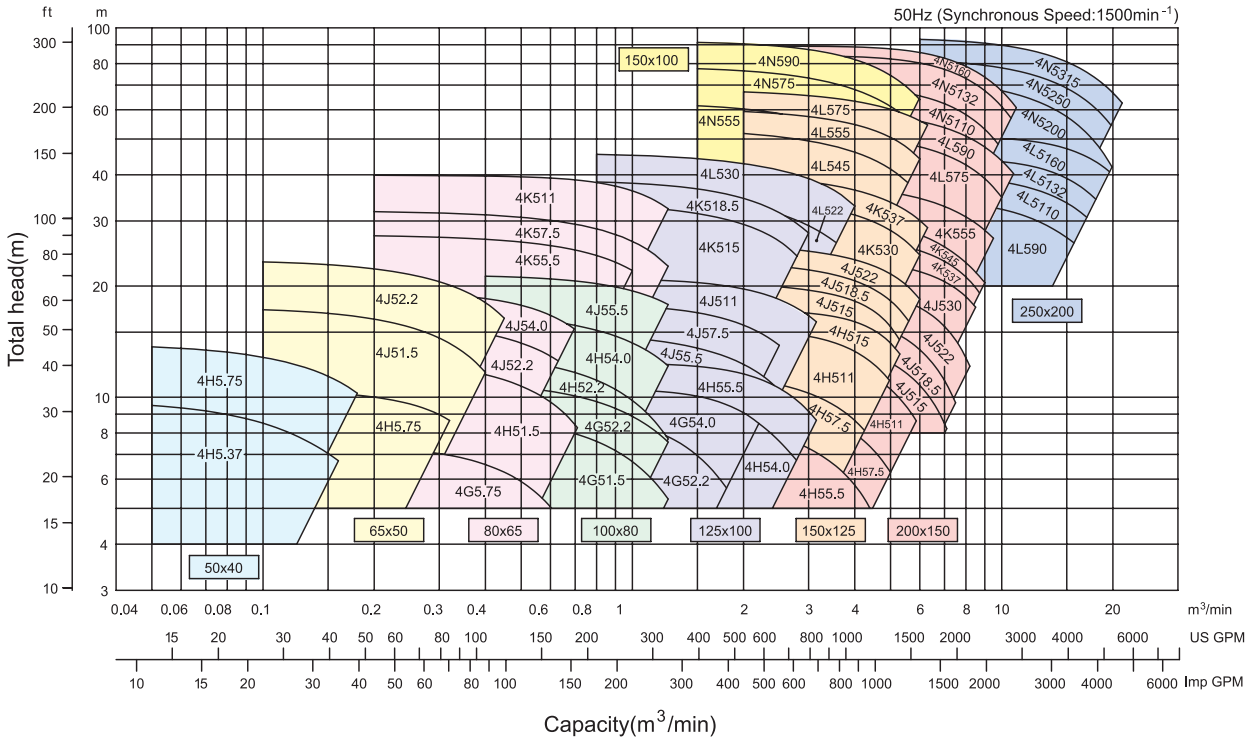
2 Poles



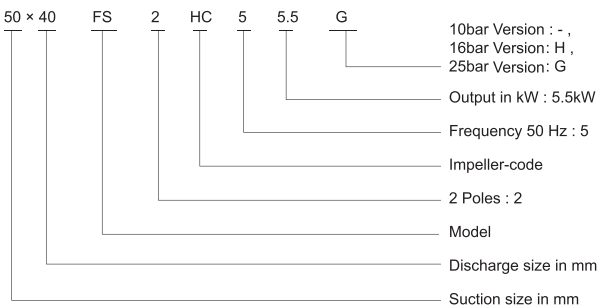
Model Code



4 Poles



Model Code

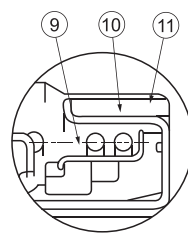
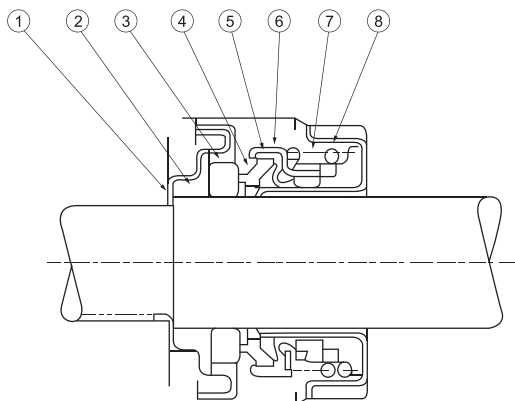


SPECIFICATIONS

Maximum working pressure		10bar	16bar	25bar
Liquid Handled	Name	clean water (PH:5.8~8.6)		
	Temperature	-10~100℃		
Construction	Impeller	Enclosed		
	Shaft seal	Mechanical seal		Mechanical seal (balanced)
	Bearing	Sealed ball bearing		
	Sealing	Self flushing		
Flange	Standard	JIS 10K RF	JIS 16K RF	JIS 25K RF
Material	Casing	Cast Iron	Ductile Cast Iron/Cast Iron△	Ductile Cast Iron
	Impeller	Stainless steel		
	Shaft	Stainless steel		
	Mechanical seal	Ceramic/Carbon/NBR		Sic/Carbon/FPM
△ The mode of cast iron pump:		100×65FS2KC-H、150×100FS2KC-H、150×100FS4NC-H 200×150FS4LC-H/FS4NC-H、250×200FS4LC-H/FS4NC-H		
Motor				
Number of poles		2poles		4poles
Synchronous speed		3000min ⁻¹		1500min ⁻¹
Phase		3 phase		
Voltage		415V±10%		
Type		Totally enclosed fan cooled (indoors)		
Protection degree		IP55		
Frequency		30~50Hz		
Optional		arrow		
Totally enclosed fan cooled (outdoors)				
Varying frequency running (0~50Hz)				
Other types of motor that user require				
Accessories				
Standard		Optional		
Common base		JIS companion flange		
Coupling		Disc couplings		
Coupling guard		-		

SECTIONAL VIEW OF MECHANICAL SEAL

Model MS1



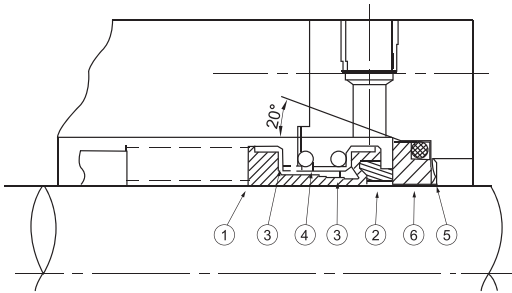
Detail of cartridge seat ring

Part No.	Part Name	Material	Qty/Unity
1	Case	304 Stainless Steel	1
2	Cup Gasket	NBR	1
3	Mating Ring	Ceramic	1
4	Seal Ring	Carbon	1
5	Bellows	NBR	1
6	Case	304 Stainless Steel	1
7	Drive Ring	304 Stainless Steel	1
8	Coil Spring	304 Stainless Steel	1
9	Spring Holder	304 Stainless Steel	1
10	Cartridge	304 Stainless Steel	1
11	Seat Ring	NBR	1

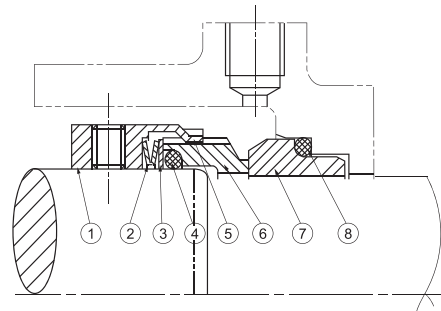
Model MS1 (10bar, 16bar)
50×40FSHC、65×50FSHC、JC
80×65FSGC、HC、JC、KC
100×80FSGC、HC、JC
125×100FSGC、HC、KC

SECTIONAL VIEW OF MECHANICAL SEAL

Model MS2



Model MS3



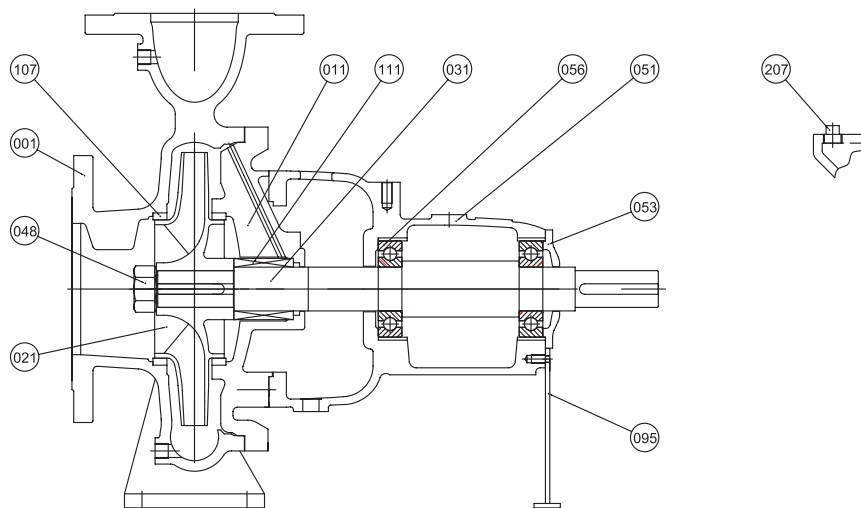
Part No.	Part Name	Material	Qty/Unity
1	Bellows	NBR	1
2	Mating Ring	Carbon	1
3	Drive Ring	NBR	1
4	Coil Spring	316 Stainless Steel	1
5	Cup Gasket	NBR	1
6	Sealing Ring	Ceramic	1

Part No.	Part Name	Material	Qty/Unity
1	Retainer	316 Stainless Steel	1
2	Spring	316 Stainless Steel	1
3	Thrust ring	316 Stainless Steel	1
4	Seat O-ring	FPM	1
5	Drive Ring	316 Stainless Steel	1
6	Balanced Face	Carbon	1
7	BP type seat	Sic	1
8	Seat O-ring	FPM	1

Model MSI (10bar, 16bar)
125×100FSJC, LC
150×125FSHC, JC, KC, LC
200×150FSHC, JC, KC, LC, NC
100×65FSKC, 150×100FSKC, NC
250×200FSLC, NC

58B-type mechanical seal can be applied to all pump model

SECTIONAL VIEW OF PUMP

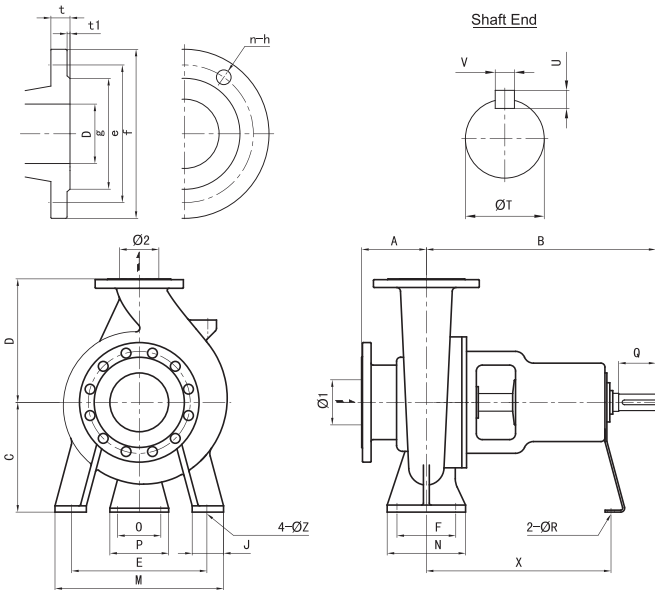


Part No.	Part Name	10bar	16bar	25bar	Qty/Unity
		Material			
207	Plug	Steel			1
111	Mechanical Seal	MS1/MS2		MS3	1
107	Lining Ring	Bronze			2
095	Support	Steel			1
056	Ball Bearing	—			2
053	Bearing Cover	Cast Iron			1
051	Bearing Housing	Cast Iron			1
048	Impeller Nut	Brass			1
031	Shaft	Stainless Steel			1
021	Impeller	Bronze			1
011	Casing Cover	Cast Iron			1
001	Casing	Cast Iron	Ductile Cast Iron/Cast Iron	Ductile Cast Iron	1

50×40FSHC
65×50FSHC/JC
80×65FSGC/HC/JC/KC
100×80FSGC/HC/JC/
125×100FSKC/JC/LC/GC/HC
150×125FSHC/JC/KC/LC
200×150FSHC/JC/KC/LC/NC
100×65FS2KC
150×100FSKC/NC
250×200FSLC/NC

DIMENSION - BARE SHAFT PUMP

Flange



■ Dimension-cast iron flange (JIS 16K RF)

D	f	e	g	t1	t	n	h
mm	mm	mm	mm	mm	mm	-	mm
40	140	105	81	2	20	4	19
50	155	120	96	2	20	8	19
65	175	140	116	2	22	8	19
80	200	160	132	2	24	8	23
100	225	185	160	2	26	8	23
125	270	225	195	2	26	8	25
150	305	260	230	2	28	12	25
200	350	305	275	2	30	12	25
250	430	380	345	2	34	12	27

■ Dimension-cast iron flange (JIS 10K RF)

D	f	e	g	t1	t	n	h
mm	mm	mm	mm	mm	mm	-	mm
40	140	105	81	2	20	4	19
50	155	120	96	2	20	4	19
65	175	140	116	2	22	4	19
80	185	150	126	2	22	8	19
100	210	175	151	2	24	8	19
125	250	210	182	2	24	8	23
150	280	240	212	2	26	8	23
200	330	290	262	2	26	12	23
250	400	355	324	2	30	12	25

■ Dimension-Ductile cast iron flange (JIS 16K RF)

D	f	e	g	t1	t	n	h
mm	mm	mm	mm	mm	mm	-	mm
40	140	105	81	2	16	4	19
50	155	120	96	2	16	8	19
65	175	140	116	2	18	8	19
80	200	160	132	2	20	8	23
100	225	185	160	2	22	8	23
125	270	225	195	2	22	8	25
150	305	260	230	2	24	12	25
200	350	305	275	2	26	12	25
250	430	380	345	2	28	12	27

■ Dimension-Ductile cast iron flange (JIS 20K RF)

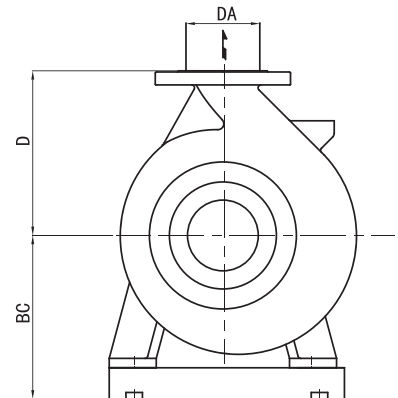
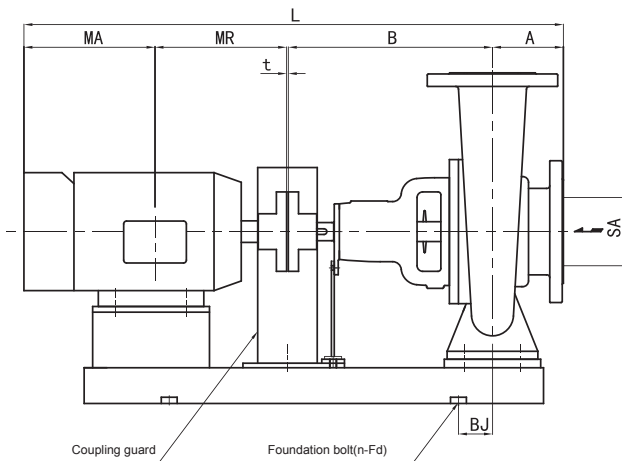
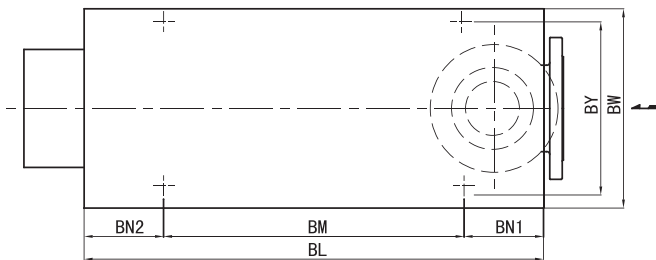
D	f	e	g	t1	t	n	h
mm	mm	mm	mm	mm	mm	-	mm
40	140	105	81	2	18	4	19
50	155	120	96	2	18	8	19
65	175	140	116	2	20	8	19
80	200	160	132	2	22	8	23
100	225	185	160	2	24	8	23
125	270	225	195	2	26	8	25
150	305	260	230	2	28	12	25
200	350	305	275	2	30	12	25
250	430	380	345	2	34	12	27

units: mm

Model	Size		Pump															Shaft			
	SA	DA	A	B	C	D	E	F	G	J	M	N	O	P	R	X	Z	T	Q	V	W
50×40FSHC	50	40	80	360	160	180	190	70	50	240	100	110	150	17	285	15	24	50	7	8	8
65×50FSHC	65	50	100	360	160	180	212	70	50	265	100	110	150	17	285	15	24	50	7	8	8
65×50FSJC	65	50	100	360	180	225	250	95	65	320	125	110	150	17	285	15	24	50	7	8	8
80×65FSGC	80	65	100	360	160	180	212	70	50	265	100	110	150	17	285	15	24	50	7	8	8
80×65FSHC	80	65	100	360	160	200	212	40	50	265	100	110	150	17	285	15	24	50	7	8	8
80×65FSJC	80	65	100	360	180	225	250	95	65	320	125	110	150	17	285	15	32	80	8	10	10
80×65FSKC	80	65	125	470	225	280	315	120	80	400	160	110	150	17	370	20	32	80	8	10	10
100×80FSGC	100	80	100	360	160	200	212	95	65	280	125	110	150	17	285	15	24	50	7	8	8
100×80FSHC	100	80	100	360	180	225	250	95	65	320	125	110	150	17	285	15	32	80	8	10	10
100×80FSJC	100	80	100	360	200	250	280	120	80	360	160	110	150	17	285	19	32	80	8	10	10
125×100FSGC	100	80	125	360	180	250	250	95	65	320	125	110	150	17	285	15	32	80	8	10	10
125×100FSHC	100	80	125	360	225	280	315	120	80	400	160	110	150	17	281	15	32	80	8	10	10
125×100FSJC	125	100	140	470	225	280	315	120	80	400	160	110	150	17	370	19	38	80	8	10	10
125×100FSKC	125	100	140	470	250	315	315	120	80	400	160	110	150	17	370	19	32	80	8	10	10
125×100FSLC	125	100	140	530	280	355	400	150	100	500	200	110	150	17	370	24	42	110	8	12	12
150×125FSHC	150	125	140	470	250	315	315	120	80	400	160	110	150	17	370	19	32	80	8	10	10
150×125FSJC	150	125	140	470	250	355	315	120	80	400	160	110	150	17	370	19	32	80	8	10	10
150×125FSKC	150	125	140	530	280	355	400	150	100	500	200	110	150	17	370	24	42	110	8	12	12
150×125FSLC	150	125	140	530	315	400	400	150	100	500	200	110	150	17	370	24	42	110	8	12	12
200×150FSHC	200	150	160	470	280	355	400	150	100	500	200	110	150	17	370	24	32	80	8	10	10
200×150FSJC	200	150	160	530	280	375	400	150	100	500	200	110	150	17	370	24	42	110	8	12	12
200×150FSKC	200	150	160	670	315	400	450	150	100	550	200	140	180	19	500	24	48	110	9	14	14
200×150FSLC	200	150	164	670	385	450	560	250	100	660	315	140	180	19	500	24	60	110	11	18	14
250×200FSLC	250	200	180	670	385	560	560	250	100	660	315	140	180	19	500	24	60	110	11	18	18
100×65FSKC	100	65	125	360	225	280	315	120	80	400	160	110	150	17	285	20	38	80	8	10	10
150×100FSKC	150	100	140	530	250	315	315	120	80	400	160	90	120	15	373	19	42	95	8	12	12
150×100FSNC	150	100	180	670	375	450	450	150	100	550	200	140	180	19	500	24	48	110	9	14	14
200×150FSNC	200	150	184	670	375	560	450	150	100	550	200	140	180	19	500	24	60	110	11	18	18
250×200FSNC	250	200	200	820	435	630	560	250	100	660	315	160	200	19	630	27	74	125	12	20	20

DIMENSION - PUMP

Pump



Dimension-cast iron flange (JIS 16K RF)

D	f	e	g	t1	t	n	h
mm	mm	mm	mm	mm	mm	-	mm
40	140	105	81	2	20	4	19
50	155	120	96	2	20	8	19
65	175	140	116	2	22	8	19
80	200	160	132	2	24	8	23
100	225	185	160	2	26	8	23
125	270	225	195	2	26	8	25
150	305	260	230	2	28	12	25
200	350	305	275	2	30	12	25
250	430	380	345	2	34	12	27

Dimension-cast iron flange (JIS 10K RF)

D	f	e	g	t1	t	n	h
mm	mm	mm	mm	mm	mm	-	mm
40	140	105	81	2	20	4	19
50	155	120	96	2	20	4	19
65	175	140	116	2	22	4	19
80	185	150	126	2	22	8	19
100	210	175	151	2	24	8	19
125	250	210	182	2	24	8	23
150	280	240	212	2	26	8	23
200	330	290	262	2	26	12	23
250	400	355	324	2	30	12	25

Dimension-Ductile cast iron flange (JIS 16K RF)

D	f	e	g	t1	t	n	h
mm	mm	mm	mm	mm	mm	-	mm
40	140	105	81	2	16	4	19
50	155	120	96	2	16	8	19
65	175	140	116	2	18	8	19
80	200	160	132	2	20	8	23
100	225	185	160	2	22	8	23
125	270	225	195	2	22	8	25
150	305	260	230	2	24	12	25
200	350	305	275	2	26	12	25
250	430	380	345	2	28	12	27

Dimension-Ductile cast iron flange (JIS 20K RF)

D	f	e	g	t1	t	n	h
mm	mm	mm	mm	mm	mm	-	mm
40	140	105	81	2	18	4	19
50	155	120	96	2	18	8	19
65	175	140	116	2	20	8	19
80	200	160	132	2	22	8	23
100	225	185	160	2	24	8	23
125	270	225	195	2	26	8	25
150	305	260	230	2	28	12	25
200	350	305	275	2	30	12	25
250	430	380	345	2	34	12	27

DIMENSION - PUMP (2P MOTOR)

units: mm

Model	Output	Size		Pump				Wt (kg)		Motor			Wt	Common Base								Wt	Total size			Wt (kg)		
	kW	SA	DA	A	B	D	BC	10/16bar	25bar	Frame	MR	MA	kg	BJ	BL	BM	BN1	BN2	BY	BW	n-φ Fd	kg	t	L	10/16bar	25bar		
50×40FS2HC	2.2	50	40	80	360	180	240	37	44	90L	168.5	207.5	26	55	700	460	120	260	290	4-φ 15	26	3	819	89	96			
	4.0									112M	200	193.5	40		740	500			280		310		28	836.5	105	112		
	5.5									132S	239	241	56		52.5	923			121		128							
65×50FS2HC	4.0	65	50	100	360	180	240	42	50	112M	200	193.5	40	55	825	575	130	290	320	4-φ 15	40	3	856.5	122	130			
	5.5									132S	239	241	56						52.5		943		138	146				
	7.5									132S	239	241	62						52.5		943		144	152				
65×50FS2JC	11	65	50	100	360	225	280	49	59	160M	323	291	96	82.5	970	650	160	350	380	4-φ 15	55	3	1077	200	210			
	15									106	106	106	210						220									
80×65FS2GC	5.5	80	65	100	360	180	240	39	47	132S	239	241	56	52.5	835	575	130	290	320	4-φ 15	40	3	943	135	143			
	7.5									132S	239	241	62						52.5		943		141	149				
80×65FS2HC	11	80	65	100	360	200	260	48	58	160M	323	291	96	72.5	920	620	150	350	380	4-φ 15	42.5	3	1077	186.5	196.5			
	15									106	106	106	196.5						206.5									
80×65FS2JC	18.5	80	65	100	360	225	280	60	72	160L	345	329	125	82.5	970	650	160	350	380	4-φ 15	55	3	1137	240	252			
	22									180M	351.5	331.5	152		980	660		390	420		49		1146	261	273			
100×80FS2GC	7.5	100	80	100	360	200	240	49	59	132S	239	241	62	52.5	835	575	130	290	320	4-φ 15	40	3	943	151	161			
	11						160M			323	291	96	72.5						920		620		150	350	380	1077	187.5	197.5
	15						106			106	106	197.5	207.5															
100×80FS2HC	18.5	100	80	100	360	225	280	62	74	160L	345	329	125	82.5	970	650	160	350	380	4-φ 15	55	3	1137	242	254			
	22									180M	351.5	331.5	152		980	660		390	420		49		1143	263	275			
100×80FS2JC	30	100	80	100	360	250	300	70	84	200L	395.5	376.5	229	85	1070	710	180	420	450	4-φ 15	57	4	1236	356	370			
	37						245			245	245	85	1110		750	460		490	74		1275		451	465				
	45						225M			414.5	400.5	307	1110		750	460		490	74		1275		451	465				
125×100FS2GC	18.5	125	100	125	360	250	280	60	72	160L	345	329	125	82.5	970	650	160	350	380	4-φ 15	55	3	1162	240	252			
	22						180M			351.5	331.5	152	980		660	390		420	49		1168		261	273				
	30						200L			395.5	376.5	229	92.5		710	420		450	59		1261		348	360				
125×100FS2HC	37	125	100	125	360	280	320	70	84	200L	395.5	376.5	245	80	1060	720	170	424	460	4-φ 15	65	3	1261	380	394			
	45						225M			414.5	400.5	307	1090		750	460		496	53		1304		430	444				
	55						250M			483.5	433.5	378	75		1290	950		486	524		69		1531	555	577			
125×100FS2JC	75	125	100	140	470	280	350	108	130	280S	514	462	550	135	1375	915	230	540	585	4-φ 19	83.5	4	1590	741.5	763.5			
	75						392			250M	483.5	433.5	378		105	1220		820	200		515		560	100	1406	584	584	
100×65FS2KC	55	100	65	125	360	280	375	106	106	280S	539.5	436.5	550	110	1270	850	210	590	630	4-φ 19	102	4	1465	758	758			
	75						405			280S	539.5	436.5	550		110	1270		850	210		590		630	102	1465	758	758	
150×100FS2KC	90	150	100	140	530	315	420	146	146	280S	539.5	436.5	550	140	1490	1010	240	590	630	4-φ 24	124	4	1650	696	696			
	110						280M			539.5	487.5	570	140		1490	1010		240	590		630		124	1701	716	716		
	110						315S			559	554	740	160		1590	1070		260	680		720		159	1787	1045	1045		
	132						315M			584.5	708.5	855	160		1590	1070		260	680		720		159	1967	1160	1160		

DIMENSION - PUMP (4P MOTOR)

units: mm

Model	Output kW	Size		Pump				Wt (kg)		Motor			Wt kg	Common Base								Wt kg	Total size		Wt (kg)	
		SA	DA	A	B	D	BC	10/16bar	25bar	Frame	MR	MA		BJ	BL	BM	BN1	BN2	BY	BW	n-φ		Fd	t	L	10/16bar
50×40FS4HC	0.37	50	40	80	360	180	240	37	44	71M	120	120	12	55	630	390	260	290	24	683	73	80	731	80.5	87.5	
	0.75																									71M
65×50FS4HC	0.75	65	50	100	360	180	240	42	50	80M	140	148	148	55	650	410	280	310	26	751	85.5	93.5	751	85.5	93.5	
65×50FS4JC	1.5	65	50	100	360	225	260	49	59	90L	168.5	173	27	42.5	710	470	320	350	30	804.5	106	116	804.5	106	116	
	2.2																									90L
80×65FS4GC	0.75	80	65	100	360	180	240	39	47	80M	140	148	17.5	55	650	410	280	310	26	751	82.5	90.5	751	82.5	90.5	
80×65FS4HC	1.5	80	65	100	360	200	240	48	58	90L	168.5	173	27	42.5	710	470	280	310	28	804.5	103	113	804.5	103	113	
80×65FS4JC	2.2	80	65	100	360	225	260	60	72	100L	193	197	33	42.5	750	510	310	340	31	853	124	136	853	124	136	
	4.0																									100L
80×65FS4KC	7.5	80	65	125	470	280	325	108	130	132M	258	267	73	65	970	650	160	390	420	49	1123	230	252	1123	230	252
	11																									
100×80FS4GC	1.5	100	80	100	360	200	240	49	59	90L	168.5	173	27	42.5	710	470	280	310	29	853	62	72	853	62	72	
100×80FS4HC	2.2	100	80	100	360	225	260	62	74	100L	193	197	33	42.5	750	510	310	340	31	853	126	138	853	126	138	
	4.0																									100L
100×80FS4JC	4.0	100	80	100	360	250	280	70	84	112M	200	193.5	45	25	770	530	350	380	36	856.5	151	165	856.5	151	165	
	5.5																									112M
125×100FS4GC	2.2	125	100	125	360	250	260	60	72	100L	193	197	33	42.5	760	520	320	350	31	878	124	136	878	124	136	
125×100FS4HC	4.0	125	100	125	360	280	303	70	84	112M	200	193.5	45	48	770	490	140	422	454	40	881.5	137	149	881.5	137	149
	5.5																									
125×100FS4JC	7.5	125	100	140	470	280	325	108	130	132M	258	267	73	65	1050	710	170	390	420	47	1093	216	238	1093	216	238
	11																									
125×100FS4KC	15	125	100	140	470	315	350	128	154	160L	345	329	130	85	1090	730	180	390	420	55	1287	313	339	1287	313	339
	18.5																									
125×100FS4LC	22	125	100	140	530	355	400	168	202	180L	370.5	347.5	180	85	1220	820	200	480	520	77	1388	425	459	1388	425	459
	30																									
150×125FS4HC	7.5	150	125	140	470	315	350	120	144	132M	258	267	73	65	970	650	160	390	420	50	1138	243	267	1138	243	267
	11																									
150×125FS4JC	15	150	125	140	470	355	350	128	154	160L	345	329	130	85	1090	730	180	390	420	55	1287	313	339	1287	313	339
	18.5																									
150×125FS4KC	30	150	125	140	530	355	400	170	204	200L	395.5	376.5	238	95	1260	840	210	480	520	83	1446	491	525	1446	491	525
	37																									
150×125FS4LC	45	150	125	140	530	355	435	205	246	225M	444.5	400.5	322	105	1330	890	240	480	520	88	1519	615	656	1519	615	656
	55																									
200×150FS4HC	5.5	200	150	160	470	355	380	137	164	132S	239	241	61	45	990	670	160	490	520	60	1113	258	285	1113	258	285
	7.5																									
200×150FS4JC	15	200	150	160	530	375	400	183	220	160L	345	329	130	75	1170	790	190	480	520	74	1367	387	424	1367	387	424
	18.5																									
200×150FS4KC	22	200	150	160	530	375	400	183	220	200L	395.5	376.5	238	95	1260	840	210	480	520	83	1466	504	541	1466	504	541
	30																									
200×150FS4LC	37	200	150	160	670	400	435	222	266	225M	444.5	400.5	322	125	1470	990	240	530	570	94	1654	614	658	1654	614	658
	45																									
150×100FS4NC	55	150	100	180	670	450	495	365	438	250M	483.5	433.5	410	135	1545	1045	250	530	570	103	1751	735	779	1751	735	779
	75																									
200×150FS4LC	90	200	150	164	670	450	465	336	336	280M	539.5	487.5	610	155	1650	1110	270	590	630	120	1865	1129	1129	1865	1129	1129
	110																									
200×150FS4NC	132	200	150	184	670	560	515	488	488	315M	614.5	708.5	960	185	1820	1220	300	680	720	154	2001	1421	1421	2001	1421	1421
	160																									
250×200FS4LC	90	250	200	180	670	560	525	505	505	280M	539.5	487.5	610	105	1710	1150	280	650	690	191	1881	1269	1269	1881	1269	1269
	110																									
250×200FS4NC	132	250	200	200	820	630																				