



EBARA JET-E Booster Series

Type DOUBLE, TRIPLE & QUATTRO JET-E (P2)

The Ebara JET-E Booster Series is a compact booster set for effective water supply for residential and commercial applications like bungalows, apartment buildings, school, hotels, and most residential and office buildings.

Double JET-E Booster system consists of two (2) and up to four (4) EBARA variable speed pump type JET-E P2 connected in parallel and mounted on common base frame. This unique booster provides the below:

- Constant pressure pumping through variable speed control
- Dry-running protection
- Optimal usage of pump as pump unit will operate alternatively to ensure equal usage
- Compact design that utilizes less space

SPECIFICATIONS

PUMP

- Self-priming centrifugal pump
- Liquid temperature : 0-40 °C
- Maximum flow : 340 l/min (Double),
: 510 l/min (Triple),
: 680 l/min (Quattro)
- Maximum head : 50 meters
- Inlet and outlet end caps : cast iron
- Mechanical seal : graphite/silicon carbide/NBR/SS304
- Impeller : stainless steel
- Pump body : stainless steel
- Motor shaft : 316 stainless steel

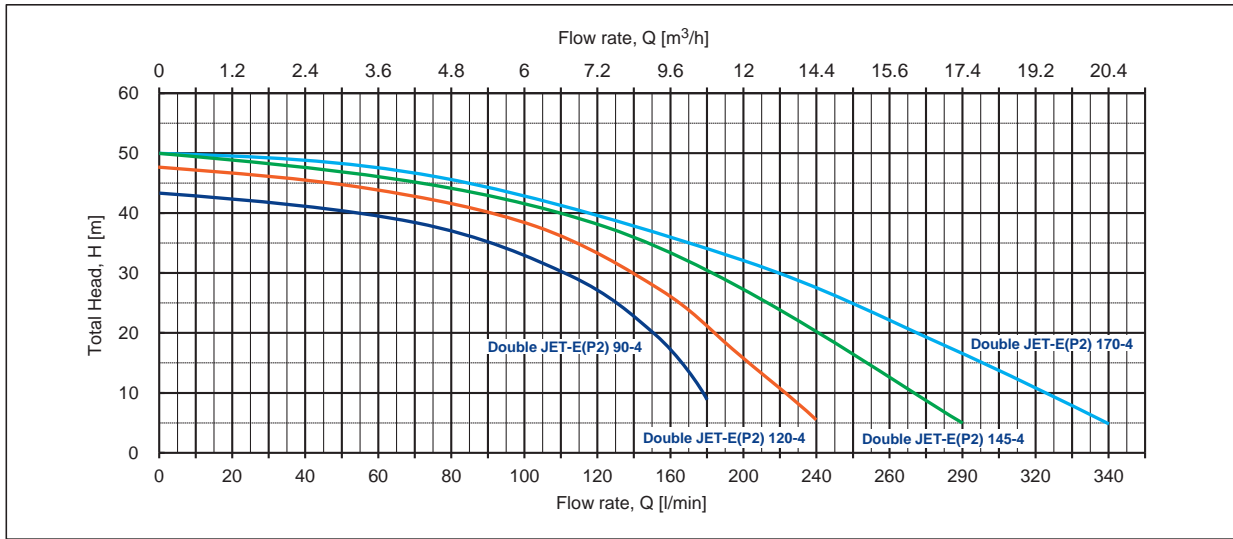
MOTOR

- Asynchronous motor : 2 poles
- Protection level : IP55
** for outdoor installation, protection cover needed.*
- Insulation class : F class
- Continuous operation :
allow continuous uninterrupted operation
- Maximum working temperature : 45 °C



PERFORMANCE CURVE

MODEL : Double JET-E (P2)

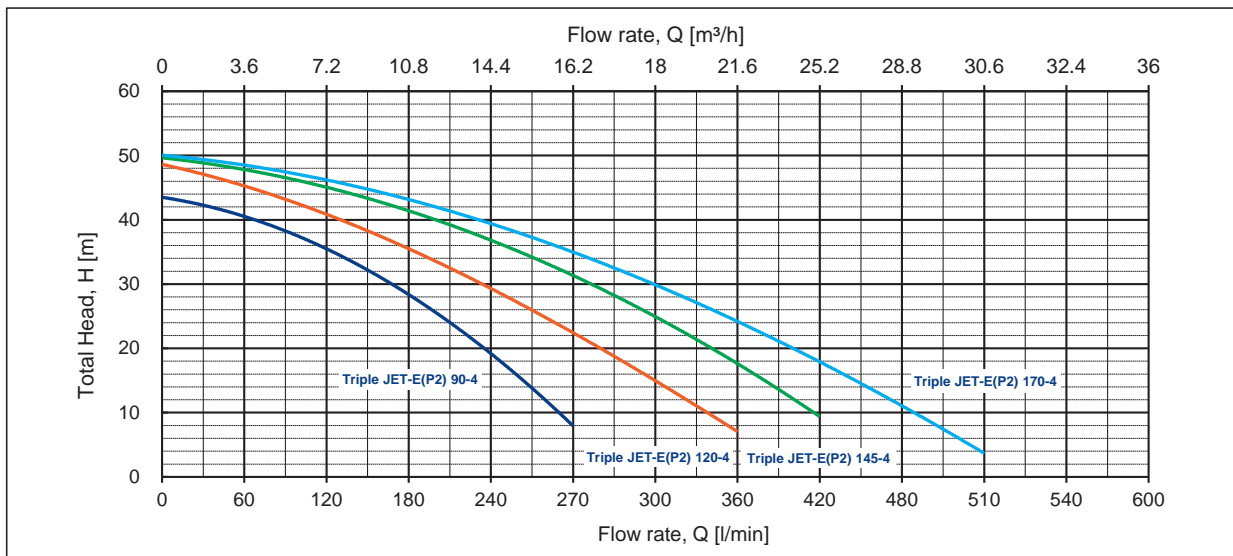


= 2850 min⁻¹

Model	Output kW	Q (m ³ /h)	0	1.2	2.4	3.6	4.8	6	7.2	9.6	12	14.4	15.6	17.4	19.2	20.4
		Q (l/min)	0	20	40	60	80	100	120	160	200	240	260	290	320	340
Double JET-E (P2) 90-4	2×0.85	H (m)	43	42	41	39	36	33	29	17	-	-	-	-	-	-
Double JET-E (P2) 120-4	2×1.0		48	47	46	44	42	39	35	27	17	6	-	-	-	-
Double JET-E (P2) 145-4	2×1.3		50	49	48	46	45	43	41	35	28	18	14	5	-	-
Double JET-E (P2) 170-4	2×1.4		50	49	49	47	46	45	43	38	32	25	22	17	9	5

Q = Flow rate H = Total Dynamic Head

MODEL : Triple JET-E (P2)



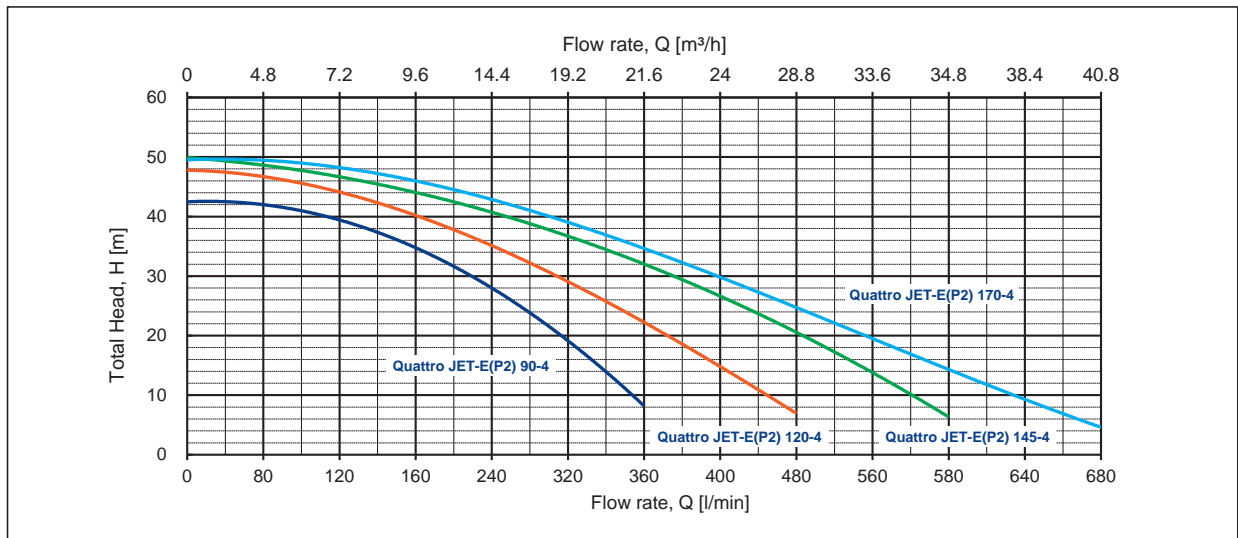
= 2850 min⁻¹

Model	Output kW	Q (m ³ /h)	0	3.6	7.2	10.8	14.4	16.2	18	21.6	25.2	28.8	30.6	32.4	36
		Q (l/min)	0	60	120	180	240	270	300	360	420	480	510	540	600
Triple JET-E (P2) 90-4	3×0.85	H (m)	43	41	36	29	17	9	-	-	-	-	-	-	-
Triple JET-E (P2) 120-4	3×1.0		48	46	42	35	27	23	17	6	-	-	-	-	-
Triple JET-E (P2) 145-4	3×1.3		50	48	45	41	35	31	28	18	8	-	-	-	-
Triple JET-E (P2) 170-4	3×1.4		50	49	46	43	38	35	32	25	17	9	5	-	-

Q = Flow rate H = Total Dynamic Head

PERFORMANCE CURVE

MODEL : Quattro JET-E (P2)



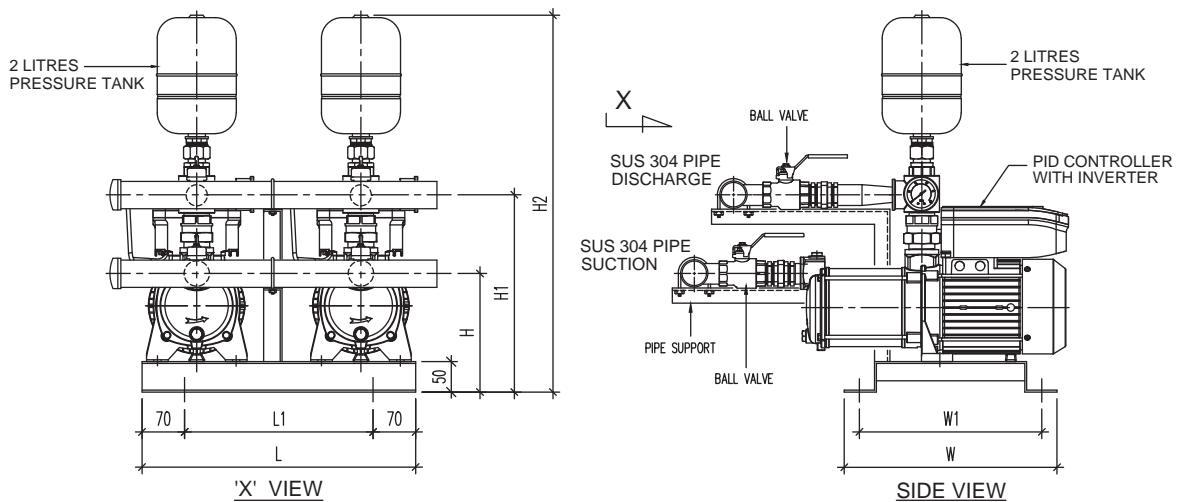
= 2850 min⁻¹

Model	Output kW	Q (m³/h) Q (l/min)	0	4.8	7.2	9.6	14.4	19.2	21.6	24	28.8	33.6	34.8	38.4	40.8
			0	80	120	160	240	320	360	400	480	560	580	640	680
Quattro JET-E (P2) 90-4	4x0.85	H (m)	43	41	39	36	29	17	9	-	-	-	-	-	-
Quattro JET-E (P2) 120-4	4x1.0		48	46	44	42	35	27	22	17	6	-	-	-	-
Quattro JET-E (P2) 145-4	4x1.3		50	48	47	45	41	35	32	28	18	17	5	-	-
Quattro JET-E (P2) 170-4	4x1.4		50	49	48	46	43	38	35	32	25	17	15	9	5

Q = Flow rate H = Total Dynamic Head

DIMENSION

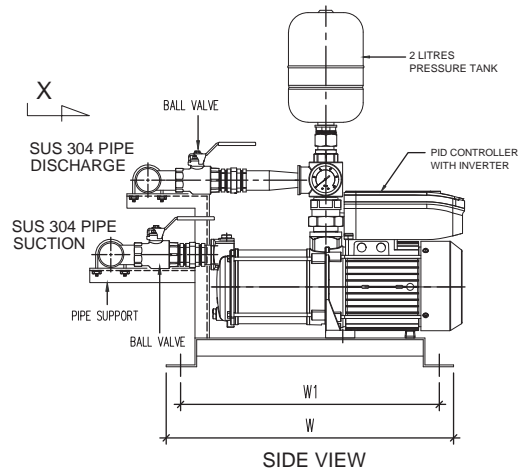
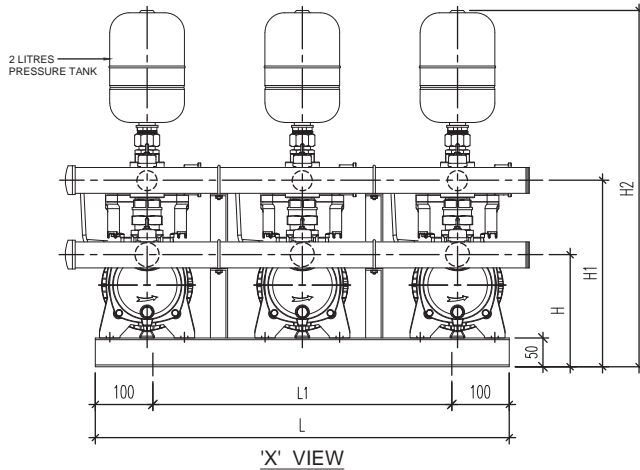
MODEL : Double JET-E (P2)



Model	Power	Dimensions (mm)							Suction Manifold	Discharge Manifold
Single Phase	kW	L	L1	H	H1	H2	W	W1	DNA	DNA
Double JET-E (P2) 90-4	2x0.85	450	310	176	270	534	350	300	2" NPT	1 ½" NPT
Double JET-E (P2) 120-4	2x1.0	450	310	176	270	534	350	300	2" NPT	1 ½" NPT
Double JET-E (P2) 145-4	2x1.3	450	310	192	290	557	350	300	2" NPT	1 ½" NPT
Double JET-E (P2) 170-4	2x1.4	450	310	192	324	598	350	300	2 ½" NPT	2" NPT

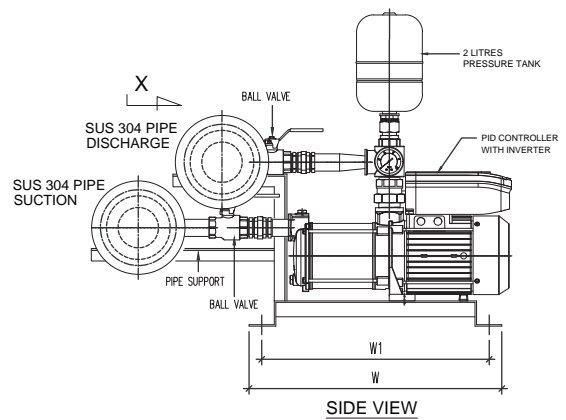
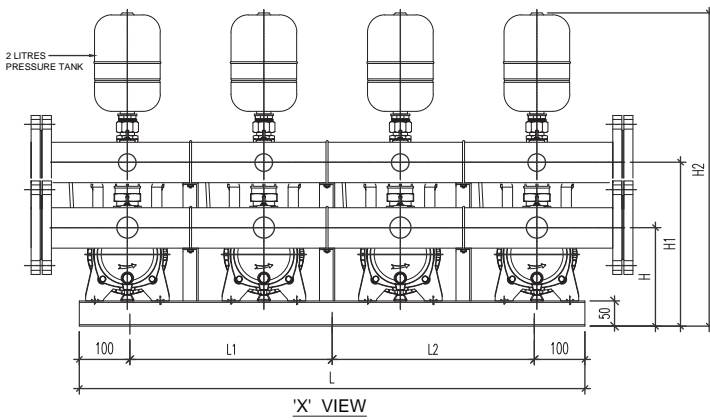
SPECIFICATIONS

MODEL : Triple JET-E (P2)



Model	Power	Dimensions (mm)							Suction Manifold	Discharge Manifold
		L	L1	H	H1	H2	W	W1		
Single Phase	kW								DNA	DNA
Triple JET-E (P2) 90-4	3x0.85	700	500	176	270	534	300	450	2 ½" BSPT	2 ½" BSPT
Triple JET-E (P2) 120-4	3x1.0	700	500	176	270	534	300	450	2 ½" BSPT	2 ½" BSPT
Triple JET-E (P2) 145-4	3x1.3	700	500	192	290	557	300	450	2 ½" BSPT	2 ½" BSPT
Triple JET-E (P2) 170-4	3x1.4	700	500	192	324	598	300	450	2 ½" BSPT	2 ½" BSPT

MODEL : Quattro JET-E (P2)



Model	Power	Dimensions (mm)								Suction Manifold	Discharge Manifold
		L	L1	L2	H	H1	H2	W	W1		
Single Phase	kW									DNA	DNA
Quattro JET-E (P2) 90-4	4x0.85	1000	400	400	176	270	534	500	450	3" PN16 Flange	3" PN16 Flange
Quattro JET-E (P2) 120-4	4x1.0	1000	400	400	176	270	534	500	450	3" PN16 Flange	3" PN16 Flange
Quattro JET-E (P2) 145-4	4x1.3	1000	400	400	192	290	557	500	450	3" PN16 Flange	3" PN16 Flange
Quattro JET-E (P2) 170-4	4x1.4	1000	400	400	192	324	598	500	450	3" PN16 Flange	3" PN16 Flange

* Dimensional details are provided for reference only.
 * All specifications are subject to change without prior notice.

Authorised dealer:



EBARA Pumps Malaysia Sdn Bhd
 6, Jalan TP3, UEP Subang Jaya Industrial Park,
 47620 Subang Jaya, Selangor, Malaysia.
 Tel : 03-8023 6622 Fax : 03-8023 9355
 Email : sales.epm@ebara.com
 Website : www.ebara.com.my

