



Horizontal Split Casing Pump

Type CSC/CNC

APPLICATIONS

- Water supply
- Hot and cold water circulation
- For cooling tower
- Irrigation and industrial use
- Drainage
- Sprinkling
- Air-conditioning
- For swimming pool

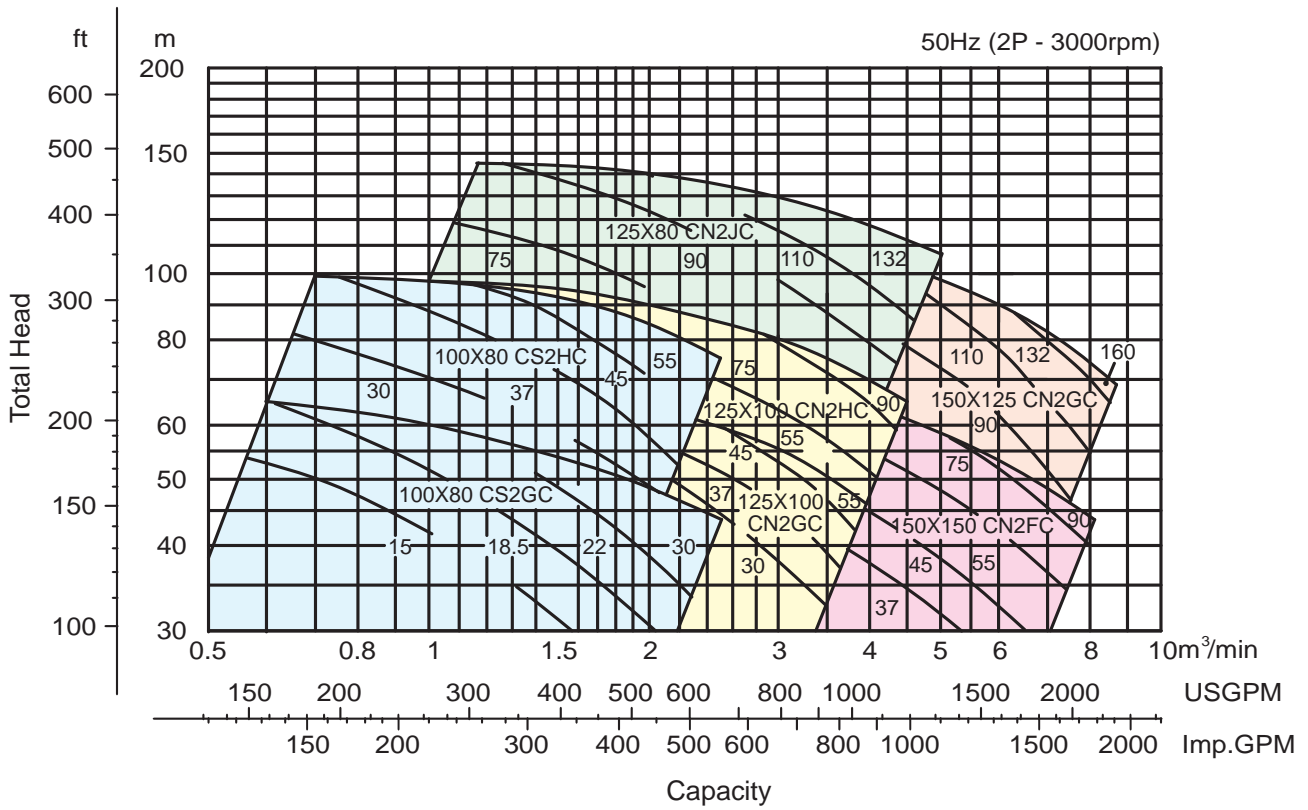
FEATURES

- Very compact design for ease of installation and permits minimum maintenance.
- Axially split casing allows the easy removal of the top casing for inspection and service.
- A wider range of performance with head up to 150 m.
- High quality sealed and cartridge type bearing unit provide high durability.
- High allowable working pressure can ensure stable running.
- Mechanical seal for easy maintenance.

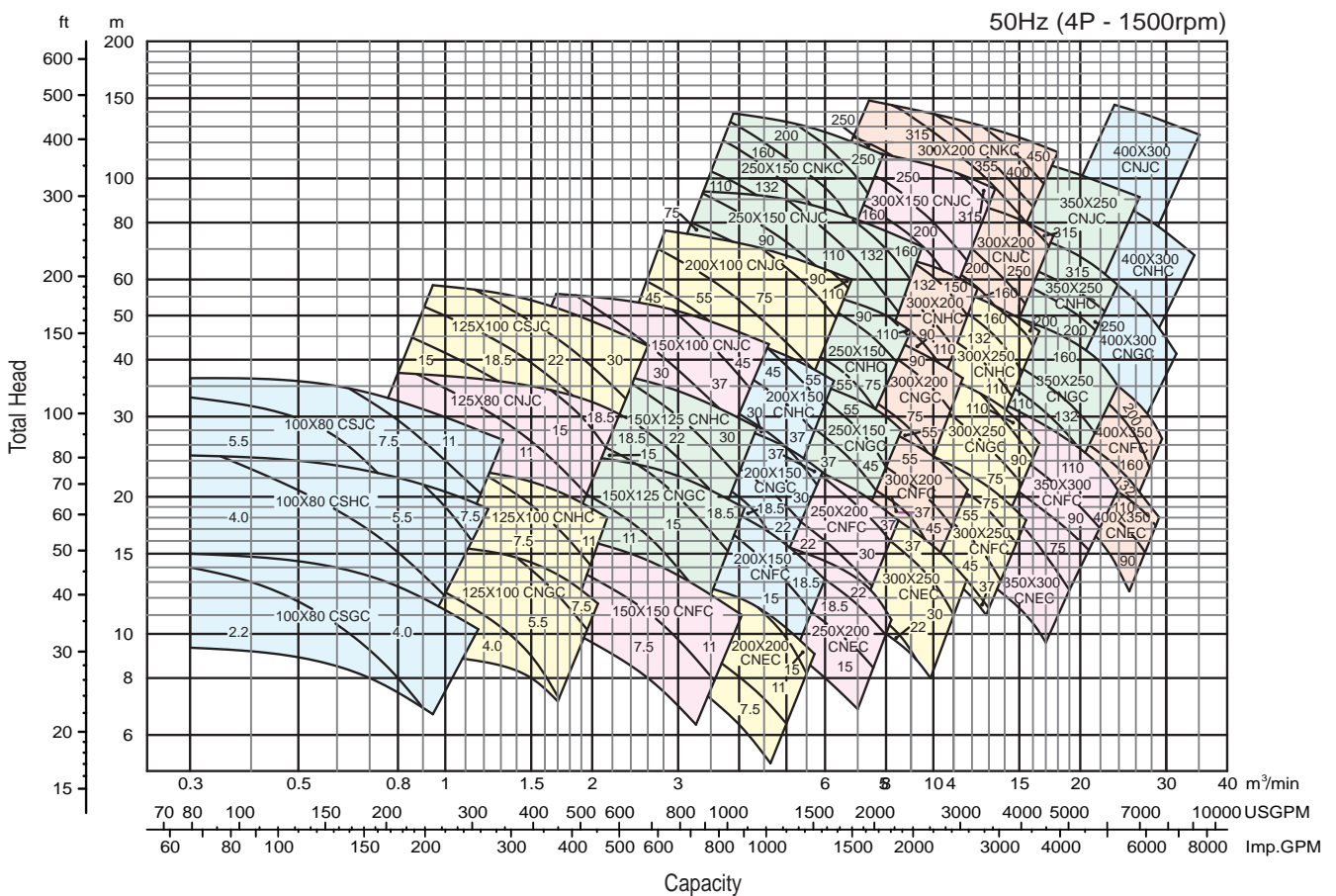


PERFORMANCE CHART

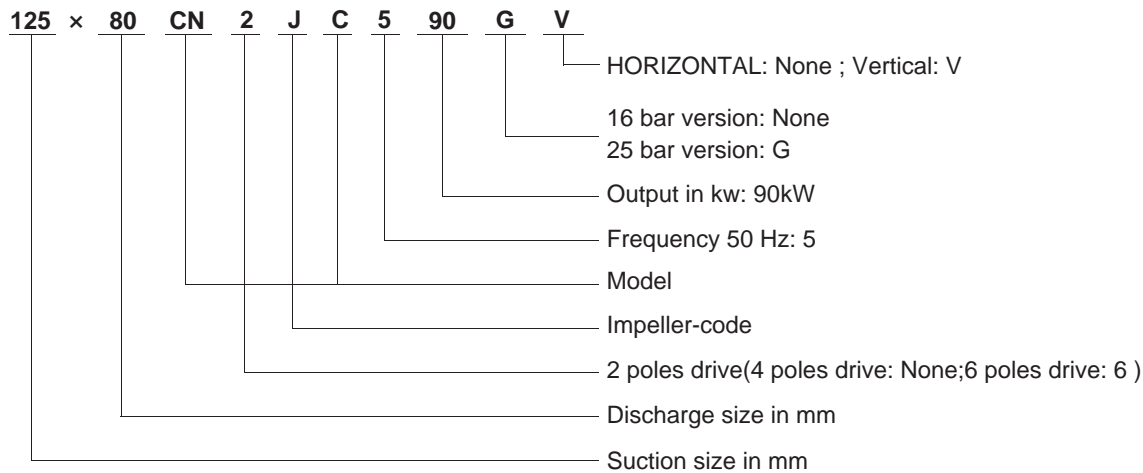
2P



4P



MODEL CODE



SPECIFICATIONS

Pump

Description		16bar		25bar	
Liquid Handled	Type of liquid	Clean water, Industrial water, River water			
	Temperature	0~80°C			
Max.Suction Pressure		16bar(16.3kgf/cm ²)		25bar(25.5kgf/cm ²)	
Construction	Impeller	Closed double suction			
	Shaft seal	Mechanical Seal/Gland Packing	Mechanical Seal(balance type)/Gland Packing		
	Lubrication	Grease			
	Bearing	Ball Bearing			
Flange		JIS 16K RF		JIS 20K RF	
Material (Standard)	Casing	Cast Iron	Ductile Cast Iron	Ductile Cast Iron	
	Impeller	ZCuSn5Pb5Zn5	Stainless Steel	ZCuSn5Pb5Zn5	
	Shaft	Stainless Steel			
	Mechanical Seal	Ceramics/Carbon/NBR or SIC/C/FPM		SIC/C/EPDM	

Motor

Number of poles	2 poles	4 poles
Synchronous speed	3000min ⁻¹	1500min ⁻¹
Phase	3 phase	
Voltage	415V±5%	
Type	Totally enclosed fan cooled (indoors)	
Protection	IP55	
Frequency	30~50Hz	

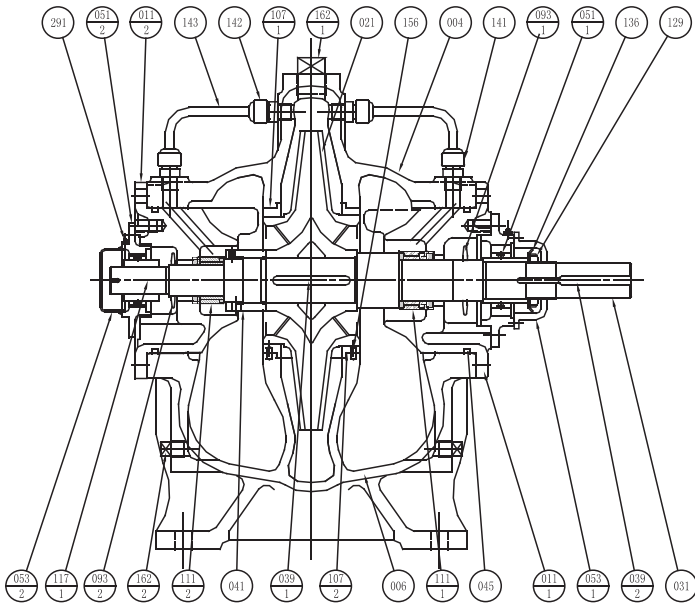
1). 6P Motor power >355kw, water cooling motor

2). Optional:

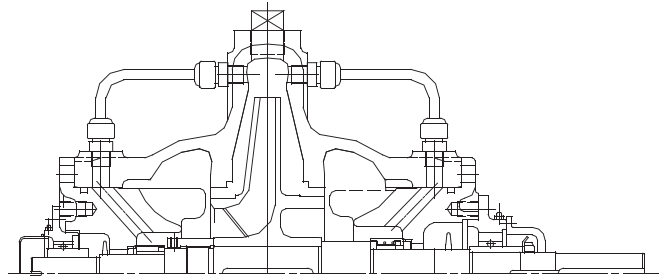
- Totally enclosed fan cooled (outdoors)
- Varying frequency running (0~50Hz)
- Other types of motor that user require

SECTIONAL VIEW

Type: CNC



Type: CSC



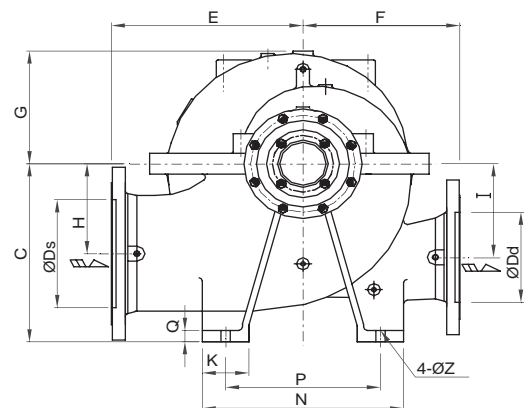
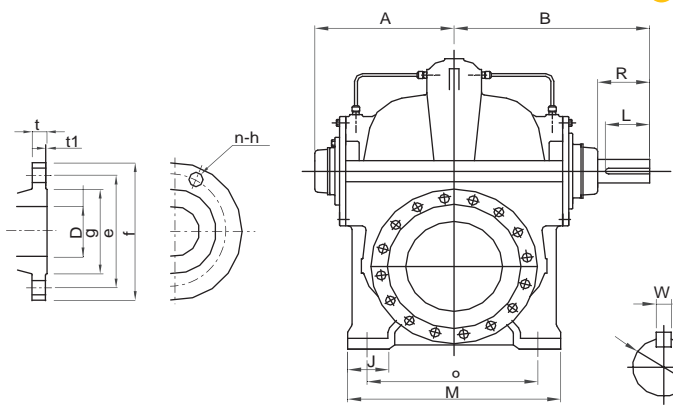
※ Note:

CNC impeller for double suction impeller, CSC impeller single inhalation impeller

No	Part Name	Material	Material	Qty
162-2	Plug	SS400	SS400	2
162-1	Plug	SS400	SS400	1
142	Straight Coupling	C2720	C2720	2
051-2	Bearing Unit	FC200	FC200	1
051-1	Bearing Unit	FC200	FC200	1
041	Impeller Nut	BC6	BC6	1
039-2	Coupling Key	S50C	S50C	1
039-1	Impeller Key	SUS420J1	SUS420J1	1
031	Shaft	SUS420J1	SUS420J1	1
021※	Impeller	FC250	FCD250	1
011-2	Side Cover	FC250	FCD250	1
011-1	Side Cover	FC250	FCD250	1
006	Casing Lower Half	FC250	FCD250	1
004	Casing Upper Half	C2720	C2720	1
291	Grease Nipple			2

No	Part Name	Material	Material	Qty
045	O-ring	NBR	NBR	2
143	Flushing Pipe	C2720	C2720	2
141	Straight Coupling	C2720	C2720	2
156	Lock Pin	SUS304	SUS304	2
136	Bearing Washer	SS400	SS400	1
129	Bearing Nut	SS400	SS400	1
117-1	Gasket (Casing)	Fiber Materials	Fiber Materials	1
111-2	Mechanical Seal	-	-	1
111-1	Mechanical Seal	-	-	1
107-1	Casing Wear Ring (CCP Side)	BC6	BC6	1
107-2	Casing Wear Ring (CP Side)	BC6	BC6	1
093-2	Deflector (CCP Side)	Rubber	Rubber	1
093-1	Deflector (CP Side)	Rubber	Rubber	1
053-2	Bearing Cover	FC200	FC200	1
053-1	Bearing Cover	FC200	FC200	1

DIMENSION - BARE SHAFT PUMP



Cast Iron 16bar Flange (JIS 16K)

units:mm

D	g	e	f	t	t1	n	h
80	132	160	200	24	2	8	φ 23
100	160	185	225	26	2	8	φ 23
125	195	225	270	26	2	8	φ 25
150	230	260	305	28	2	12	φ 25
200	275	305	350	30	2	12	φ 25
250	345	380	430	34	2	12	φ 27
300	395	430	480	36	3	16	φ 27
350	440	480	540	38	3	16	φ 33
400	495	540	605	42	3	16	φ 33

Ductile Cast Iron 25bar Flange (JIS 20K)

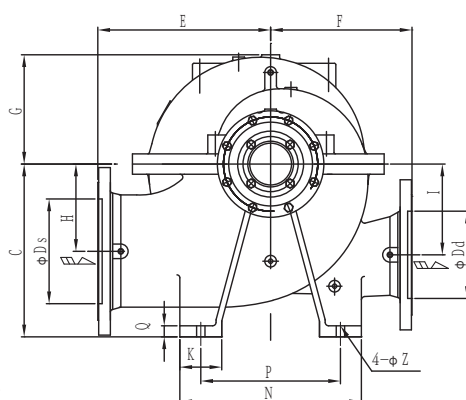
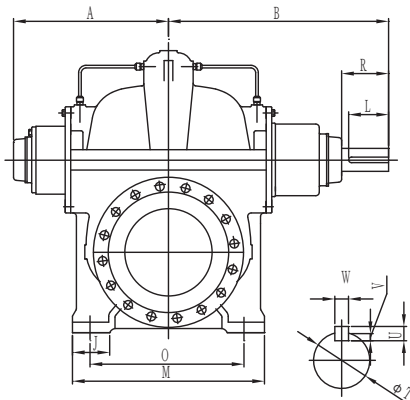
units:mm

D	g	e	f	t	t1	n	h
80	132	160	200	22	2	8	φ 23
100	160	185	225	24	2	8	φ 23
125	195	225	270	26	2	8	φ 25
150	230	260	305	28	2	12	φ 25
200	275	305	350	30	2	12	φ 25
250	345	380	430	34	2	12	φ 27
300	395	430	480	36	3	16	φ 27
350	440	480	540	40	3	16	φ 33
400	495	540	605	46	3	16	φ 33

DIMENSION - BARE SHAFT PUMP

units:mm

Model	Size		Pump															Shaft					Wt		
	Ds	Dd	A	B	C	E	F	G	H	I	J	K	M	N	O	P	Q	Z	L	R	T	U	V	W	KG
100X80CSGC	100	80	221	250	295	270	240	169	140	140	60	70	300	290	250	230	20	19	56	68	28	8	5	10	143
100X80CSHC	100	80	221	250	295	280	220	185	150	160	60	70	300	290	250	230	20	19	56	68	28	8	5	10	165
100X80CSJC	100	80	221	250	295	280	230	202	160	180	60	70	300	290	250	230	20	19	56	63	28	8	5	10	200
125X100CSJC	125	100	247	325	375	350	280	263	200	230	90	100	430	400	350	300	20	19	80	82	38	8	5	10	280
125X100CNGC	125	100	231	350	295	290	250	181	150	150	60	70	300	290	250	230	20	19	80	82	38	8	5	10	209
125X100CNHC	125	100	231	350	295	300	250	195	150	160	60	70	300	290	250	230	20	19	80	82	38	8	5	10	242
125X80CNJC	125	80	231	350	295	330	250	226	150	190	70	80	340	320	280	250	20	19	80	82	38	8	5	10	250
150X150CNFC	150	150	262	370	355	330	290	205	180	170	80	90	380	360	310	270	25	19	80	82	38	8	5	10	253
150X125CNGC	150	125	271	395	355	330	260	224	190	190	80	90	380	360	310	270	25	19	90	102	48	9	5.5	14	275
150X125CNHC	150	125	262	370	355	350	280	243	190	210	80	90	380	360	310	270	25	19	80	82	38	8	5	10	270
150X100CNJC	150	100	271	395	390	380	290	269	190	240	90	100	430	400	350	300	25	19	90	102	48	9	5.5	14	330
200X200CNEC	200	200	263	370	375	355	300	223	190	190	90	100	430	400	350	300	25	19	80	82	38	8	5	10	270
200X150CNFC	200	150	263	370	375	355	285	224	190	190	90	100	430	400	350	300	25	19	80	82	38	8	5	10	280
200X150CNGC	200	150	263	370	375	355	285	245	200	210	90	100	430	400	350	300	25	19	80	82	38	8	5	10	310
200X150CNHC	200	150	282	395	390	375	295	268	200	230	90	100	430	400	350	300	25	19	90	92	48	9	5.5	14	355
200X100CNJC	200	100	305	450	445	420	335	309	200	270	100	110	480	450	390	340	25	24	100	112	55	10	6	16	445
250X200CNEC	250	200	273	395	425	395	315	243	210	210	100	110	480	450	390	340	25	24	80	97	38	8	5	10	360
250X200CNFC	250	200	282	395	425	395	315	247	210	210	100	110	480	450	390	340	25	24	90	92	48	9	5.5	14	380
250X150CNGC	250	150	282	395	445	395	315	276	220	240	100	110	480	450	390	340	25	24	90	92	48	9	5.5	14	415
250X150CNHC	250	150	315	450	445	430	325	299	220	260	100	110	480	450	390	340	25	24	100	102	55	10	6	16	500
250X150CNJC	250	150	350	500	495	470	355	346	220	300	110	120	550	520	450	400	30	24	110	124	65	11	7	18	605
250X150CNKC	250	150	382	530	500	505	430	407	290	345	110	120	550	520	450	400	30	24	125	141	75	12	8	20	835
300X250CNEC	300	250	302	415	475	445	355	274	235	235	110	120	550	520	450	400	30	24	90	92	48	9	5.5	14	435
300X200CNFC	300	200	315	450	475	445	355	280	235	235	110	120	550	520	450	400	30	24	100	102	55	10	6	16	490
300X200CNGC	300	200	315	470	495	445	355	300	250	270	110	120	550	520	450	400	30	24	100	122	55	10	6	16	520
300X200CNHC	300	200	350	500	495	465	365	332	250	290	110	120	550	520	450	400	30	24	110	124	65	11	7	18	625
300X150CNJC	300	150	382	530	500	520	405	384	250	335	110	120	550	520	450	400	30	24	125	141	75	12	8	20	785
300X250CNFC	300	250	335	470	495	495	405	306	250	260	110	120	550	520	450	400	30	24	100	102	55	10	6	16	570
300X250CNGC	300	250	360	500	495	495	405	313	250	260	110	120	550	520	450	400	30	24	110	114	65	11	7	18	620
300X250CNHC	300	250	360	500	520	495	405	337	275	295	110	120	550	520	450	400	30	24	110	114	65	11	7	18	615
300X200CNJC	300	200	382	530	500	525	415	379	275	320	110	120	550	520	450	400	30	24	125	141	75	12	8	20	860
300X200CNKC	300	200	415	585	560	570	475	436	290	380	140	150	620	700	500	550	35	26	140	156	85	14	9	22	1070
350X300CNFC	350	300	386	530	600	560	450	345	310	310	130	150	620	700	500	550	38	26	110	125	65	11	7	18	800
350X250CNGC	350	250	386	530	600	560	450	350	310	303	135	150	620	700	500	550	38	26	110	125	65	11	7	18	790
350X250CNHC	350	250	414	560	600	560	440	373	315	330	135	150	620	700	500	550	38	26	125	140	75	12	7.5	20	845
400X350CNEC	400	350	451	600	600	596	570	470	355	320	140	150	720	700	590	550	38	26	110	124	65	11	7	18	1030
400X350CNFC	400	350	439	585	630	625	510	385	305	344	150	150	700	700	550	550	38	26	125	140	75	12	7.5	20	1035



Cast Iron 16bar Flange (JIS 16K)

units:mm

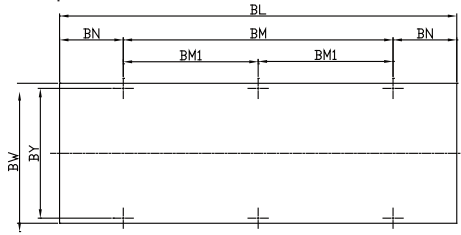
D	g	e	f	t	t1	n	h
250	345	380	430	28	2	12	φ 27
300	395	430	480	30	3	16	φ 27
350	440	480	540	34	3	16	φ 33
400	495	540	605	38	3	16	φ 33
450	560	605	675	40	3	20	φ 33
500	615	660	730	42	3	20	φ 33

units:mm

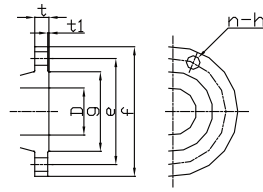
Model	Size		Pump															Shaft					Wt		
	Ds	Dd	A	B	C	E	F	G	H	I	J	K	M	N	O	P	Q	Z	L	R	T	U	V	W	KG
350X250CNJC	350	250	455	625	690	650	500	490	380	450	120	140	700	700	620	560	30	28	140	156	85	14	9	22	1440
350X300CNEC	350	300	414	556	580	550	420	375	290	320	120	140	700	600	620	460	30	28	100	112	55	10	6	16	640
400X300CNGC	400	300	510	680	630	620	510	435	315	380	120	140	800	700	720	560	30	28	140	156	85	14	9	22	1170
400X300CNHC	400	300	514	733	710	730	530	485	315	440	120	140	800	800	720	660	30	28	163	177	95	14	9	25	1580
400X300CNJC	400	300	514	733	775	730	560	545	430	505	120	140	800	800	720	660	30	28	163	177	95	14	9	25	2210
450X350CNGC	450	350	530	700	700	690	550	485	355	415	130	160	860	800	780	640	35	30	140	156	85	14	9	22	1270
450X350CNHC	450	350	534	748	775	800	600	545	355	475	130	160	860	900	780	640	35	30	163	177	95	14	9	25	1780
450X300CNJC	450	300	534	748	875	820	630	610	480	570	130	160	860	900	780	740	35	30	163	177	95	14	9	25	2180
450X400CNEC	450	400	492	638	710	690	550	460	365	390	130	160	860	800	780	640	35	30	110	124	65	11	7	18	1100
450X400CNFC	450	400	517	668	710	690	550	460	365	390	130	160	860	800	780	640	35	30	125	141	75	12	8	20	1160
500X350CNGC	500	350	599	808	775	750	600	535	395	470	130	160	920	900	840	740	35	30	163	177	95	14	9	25	1810
500X350CNHC	500	350	622	819	825	900	640	600	395	530	130	160	920	1000	840	840	35	30	178	180	115	18	11	32	2430
500X350CNJC	500	350	622	819	925	920	710	675	535	635	130	160	920	1000	840	840	35	30	178	180	115	18	11	32	3200
500X400CNFC	500	400	549	720	775	750	600	515	410	450	130	160	920	900	840	740	35	30	140	156	85	14	9	22	1480
500X450CNEC	500	450	543	693	775	750																			

DIMENSION - 2 POLE

Pump



Flange



Cast Iron 16bar Flange(JIS 16K)

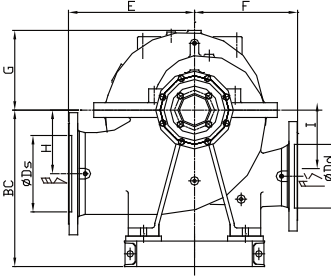
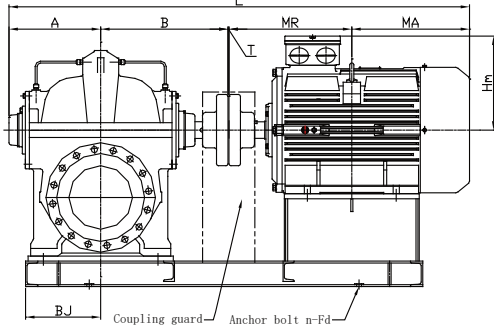
units:mm

D	g	e	f	t	t1	n	h
80	132	160	200	24	2	8	φ 23
100	160	185	225	26	2	8	φ 23
125	195	225	270	26	2	8	φ 25
150	230	260	305	28	2	12	φ 25
200	275	305	350	30	2	12	φ 25
250	345	380	430	34	2	12	φ 27
300	395	430	480	36	3	16	φ 27
350	440	480	540	38	3	16	φ 33
400	495	540	605	42	3	16	φ 33

Ductile Cast Iron 25bar Flange(JIS 20K)

units:mm

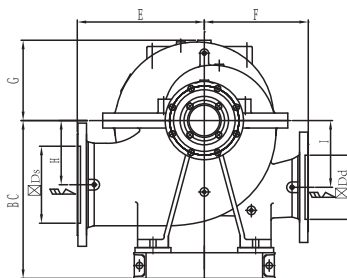
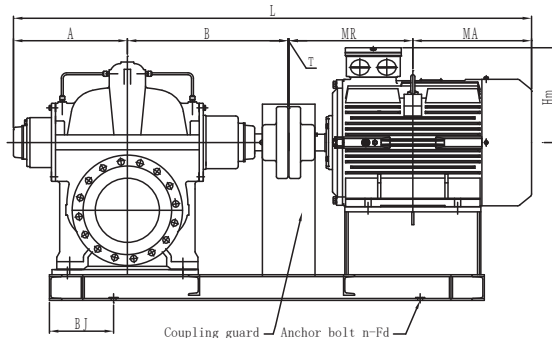
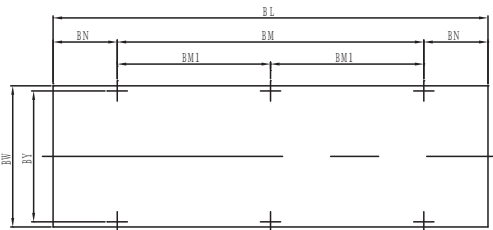
D	g	e	f	t	t1	n	h
80	132	160	200	22	2	8	φ 23
100	160	185	225	24	2	8	φ 23
125	195	225	270	26	2	8	φ 25
150	230	260	305	28	2	12	φ 25
200	275	305	350	30	2	12	φ 25
250	345	380	430	34	2	12	φ 27
300	395	430	480	36	3	16	φ 27
350	440	480	540	40	3	16	φ 33
400	495	540	605	46	3	16	φ 33



units:mm

Model	Size		Pump									Motor					Common Base							Total						
	Ds	Dd	A	B	C	E	F	G	H	I	wt (kg)	Motor kW	Frame	MR	MA	Hm	wt (kg)	BJ	BC	BN	BM	BL	BW	BY	N-Fd	wt (kg)	T	L	wt (kg)	
100X80CS2GC	100	80	221	250	295	270	240	169	140	140	143	15	160M	323	292	250	115	170	395	160	625	945	380	350	4-φ15	57	3	1089	334	
												18.5	160L	345	320	128	59									1139				347
												22	180M	351.5	348.5	275	165									1174				386
												30	200L	395.5	374.5	324	225									1245				459
100X80CS2HC	100	80	221	250	295	280	220	185	150	160	165	30	200L	395.5	374.5	324	225	165	415	180	670	1030	450	410	4-φ19	72	4	395.5	481	
												37	200L	395.5	374.5	324	246									502				
												45	225M	414.5	405.5	335	296									1295				555
												30	200L	395.5	374.5	324	225									200L				528
125X100CN2GC	125	100	231	350	295	290	250	181	150	150	209	37	200L	395.5	374.5	324	246	165	165	190	750	1130	450	410	4-φ19	75	4	1405	601	
												45	225M	414.5	405.5	335	296									1500				711
												55	250M	482.5	432.5	375	390									1500				711
												45	225M	414.5	405.5	335	296									1405				639
125X100CN2HC	125	100	231	350	295	300	250	195	150	160	242	55	250M	482.5	432.5	375	390	165	415	220	840	1280	550	510	4-φ19	88	4	1500	744	
												75	280S	514	446	405	504									1545				898
												90	280M	539.5	470.5	405	536									1595				929
												75	280S	514	446	405	504									1545				898
125X80CN2JC	125	80	231	350	295	330	250	226	150	190	250	75	280S	514	446	405	504	185	415	240	915	1395	630	590	4-φ19	130	4	1545	908	
												90	280M	539.5	470.5	405	536									1595				939
												110	315S	559	631	555	865									1775				1298
												55	250M	482.5	432.5	375	390									1551				770
150X150CN2FC	150	150	262	370	355	330	290	205	180	170	253	75	280S	514	446	405	504	205	475	240	955	1435	630	590	4-φ19	119	4	1596	900	
												90	280M	539.5	470.5	405	536									1646				931
												110	315S	559	631	555	865									1826				1306
												55	250M	482.5	432.5	375	390									1551				770
150X125CN2GC	150	125	271	395	355	330	260	224	190	190	275	90	280M	539.5	470.5	405	536	205	475	240	980	1460	630	590	4-φ19	121	4	1680	950	
												110	315S	559	631	555	865									1860				1364
												132	315M	584.5	715.5	555	960									1459				1534
												160	315L	610	690	1035	1970									1534				

DIMENSION - 4 POLE



Ductile Cast Iron 16bar Flange (JIS 16K)

units:mm

D	g	e	f	t	t1	n	h
80	132	160	200	24	2	8	φ 23
100	160	185	225	26	2	8	φ 23
125	195	225	270	26	2	8	φ 25
150	230	260	305	28	2	12	φ 25
200	275	305	350	30	2	12	φ 25
250	345	380	430	34	2	12	φ 27
300	395	430	480	36	3	16	φ 27
350	440	480	540	38	3	16	φ 33
400	495	540	605	42	3	16	φ 33

Ductile Cast Iron 25bar Flange (JIS 20K)

units:mm

D	g	e	f	t	t1	n	h
80	132	160	200	22	2	8	φ 23
100	160	185	225	24	2	8	φ 23
125	195	225	270	26	2	8	φ 25
150	230	260	305	28	2	12	φ 25
200	275	305	350	30	2	12	φ 25
250	345	380	430	34	2	12	φ 27
300	395	430	480	36	3	16	φ 27
350	440	480	540	40	3	16	φ 33
400	495	540	605	46	3	16	φ 33

DIMENSION - 4 POLE

units:mm

Model	Motor		Size		Pump									Motor					Common Base										Total		
	kW	Ds	Dd	A	B	C	E	F	G	H	I	wt(kg)	Frame	MR	MA	Hm	wt(kg)	BJ	BC	BN	BM	BM1	BL	BW	BY	n-φ	wt(kg)	T	L	wt(kg)	
100X80CSGC	2.2	100	80	221	250	295	270	240	169	140	140	143	100L	193	192	165	31	165	375	120	480	-	720	330	300	4-φ15	37	3	L	859	215
	4												112M	200	200	175	44										40			874	234
100X80CSHC	5.5	100	80	221	250	295	280	220	185	150	160	165	112M	200	200	175	44	165	375	120	560	-	820	330	300	4-φ15	40	3	L	874	256
	4												132S	239	231	198	61										43			944	275
100X80CSJC	7.5	100	80	221	250	295	280	230	202	160	180	200	132M	258	252	252	71	165	375	130	560	-	820	330	300	4-φ15	43	3	L	984	288
	5.5												132S	239	231	198	61										43			944	310
125X100CSJC	18.5	125	100	247	325	375	350	280	263	200	230	280	132M	258	252	252	71	235	475	180	770	-	1130	420	390	4-φ15	43	3	L	984	323
	4												160M	323	292	250	110										75			1089	372
125X100CNGC	5.5	125	100	231	350	295	290	250	181	150	150	209	160L	345	320	250	132	235	475	190	790	-	1170	450	420	4-φ15	78	3	L	1275	535
	4												180M	351.5	348.5	275	164										82			1346	606
125X100CNHC	7.5	125	100	231	350	295	300	250	195	150	160	242	112M	200	200	175	44	165	375	150	620	-	920	330	300	4-φ15	41	3	L	1054	324
	11												132M	239	231	198	61										45			1094	334
125X80CNJC	15	125	80	231	350	295	330	250	226	150	190	250	160M	323	292	250	110	185	395	170	720	-	1060	380	350	4-φ15	55	3	L	1199	426
	18.5												200L	395.5	374.5	324	225										60			1249	451
150X100CNJC	37	150	100	271	395	390	380	290	269	190	240	330	160L	323	292	250	110	235	510	210	900	-	1320	490	450	4-φ19	82	4	L	1485	737
	45												225M	444.5	400.5	335	305										98.5			1515	757
150X150CNFC	7.5	150	150	262	370	355	330	290	205	180	170	253	132M	258	252	198	71	205	455	160	660	-	980	390	360	4-φ15	62	3	L	1145	396
	11												160M	323	292	250	110										66			1250	393
150X125CNGC	15	150	125	271	395	355	330	260	224	190	190	275	160L	323	292	250	110	205	455	180	770	-	1130	390	360	4-φ15	70	3	L	1284	468
	18.5												200L	395.5	374.5	324	225										71			1334	490
150X125CNHC	22	150	125	262	370	355	350	280	243	190	210	270	180M	351.5	348.5	275	164	205	455	190	770	-	1150	410	380	4-φ15	73	3	L	1335	520
	30												200L	395.5	374.5	324	225										80			1406	594
200X100CNJC	45	200	100	305	450	445	420	335	309	200	270	445	225M	444.5	400.5	335	305	260	565	240	920	-	1400	490	450	4-φ19	112	4	L	1604	886
	55												250M	482.5	432.5	375	400										130			1674	1009
200X150CNHC	37	200	150	282	395	390	375	295	268	200	230	355	280S	514	466	405	553	235	510	210	900	-	1320	490	450	4-φ19	130	4	L	1739	1190
	45												280M	539.5	490.5	405	582										157			1789	1235
200X200CNEC	7.5	200	200	263	370	375	355	300	223	190	190	270	200L	395.5	374.5	324	225	235	475	180	770	-	1103	420	390	4-φ15	96	3	L	1451	695
	11												225M	444.5	400.5	335	305										98.5			1496	762
200X150CNFC	15	200	150	263	370	375	355	285	224	190	190	280	160L	323	292	250	110	235	475	180	770	-	1130	420	390	4-φ15	70	3	L	1246	421
	18.5												200L	395.5	374.5	324	225										76			1301	488
200X150CNGC	22	200	150	263	370	375	355	285	245	200	210	310	160L	323	292	250	110	235	475	180	770	-	1103	420	390	4-φ15	76	3	L	1251	466
	30												180M	351.5	348.5	275	164										79			1336	566
250X150CNGC	37	250	150	282	395	445	395	315	276	220	240	415	200L	395.5	374.5	324	225	260	565	220	900	-	1340	490	450	4-φ19	94	4	L	1407	648
	45												225M	444.5	400.5	335	285										97			1452	716
250X150CNHC	55	250	150	315	450	445	430	325	299	220	260	500	225M	444.5	400.5	335	305	260	565	240	935	-	1415	550	510	4-φ19	109.5	4	L	1496	834
	75												250M	482.5	432.5	375	400										124			1696	973
250X150CNJC	90	250	150	350	500	495	470	355	346	220	300	605	280S	514	466	405	553	260	585	260	1050	-	1570	630	590	4-φ24	157	4	L	1749	1246
	110												280M	539.5	490.5	405	582										179			1799	1290
250X200CNFC	132	250	200	282	395	425	395	315	247	210	210	380	315M	614.5	715.5	555	995	235	475	310	1210	-	1830	720	680	4-φ19	184	4	L	1834	1378
	160												315L	640	690	555	1070										236			2074	1791
250X200CNEC	22	250	200	273	395	425	395	315	243	210	210	360	180L	370.5	359.5	275	180	260	545	200	830	-	1230	470	430	4-φ19	98	3	L	1410	671
	30												200L	395.5	374.5	324	225										104			1451	728
300X200CNFC	37	300	200	315	450	475	445	355	280	235	235	490	225M	444.5	400.5	335	305	295	595	230	970	-	1430	550	510	4-φ19	107	4	L	1496	796
	45												250M	482.5	432.5	375	400										136			1684	1064
300X200CNGC	55	300	200	315	470	495	445	355	300	250	270	520	280S	514	466	405	553	295	635	250	1030	-	1530	550	510	4-φ19	143	4	L	1704	1097
	75												280M	539.5	490.5	405	582										177			1719	1330
300X200CNHC	90	300	200	350	500	495	465	365	332	250	290	625	280M	539.5	490.5	405	582	295	635	270	1120	-	1660	603	590	4-φ24	184	4	L	1884	1442
	110												315S	589	631	555	900										236			2074	1811
300X250CNEC	132	300	250	302	415	475	445	355	274	235	235	435	315L	640	690	555	1070	295	595	210	860	-	1280	550	510	4-φ19	113	3	L	1884	1442
	160												200L	395.5	374.5	324	225										120			1491	791
300X250CNFC	37	300	250	302	415	475	445	355	274	235	235	435	225S	432	383	335	285	295	615	250	955	-	1455	550	510	4-φ19	123	4	L	1536	867
	45																														

