



## Stainless Steel Submersible Pumps Type BSP

### APPLICATIONS

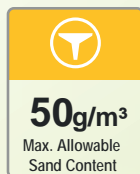
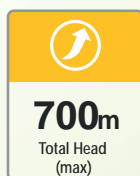
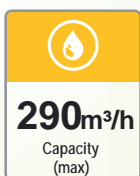
- Water supply from borehole wells
- Agricultural irrigation
- Industrial applications
- Mining, Fountains
- Pressure boosting

### FEATURES

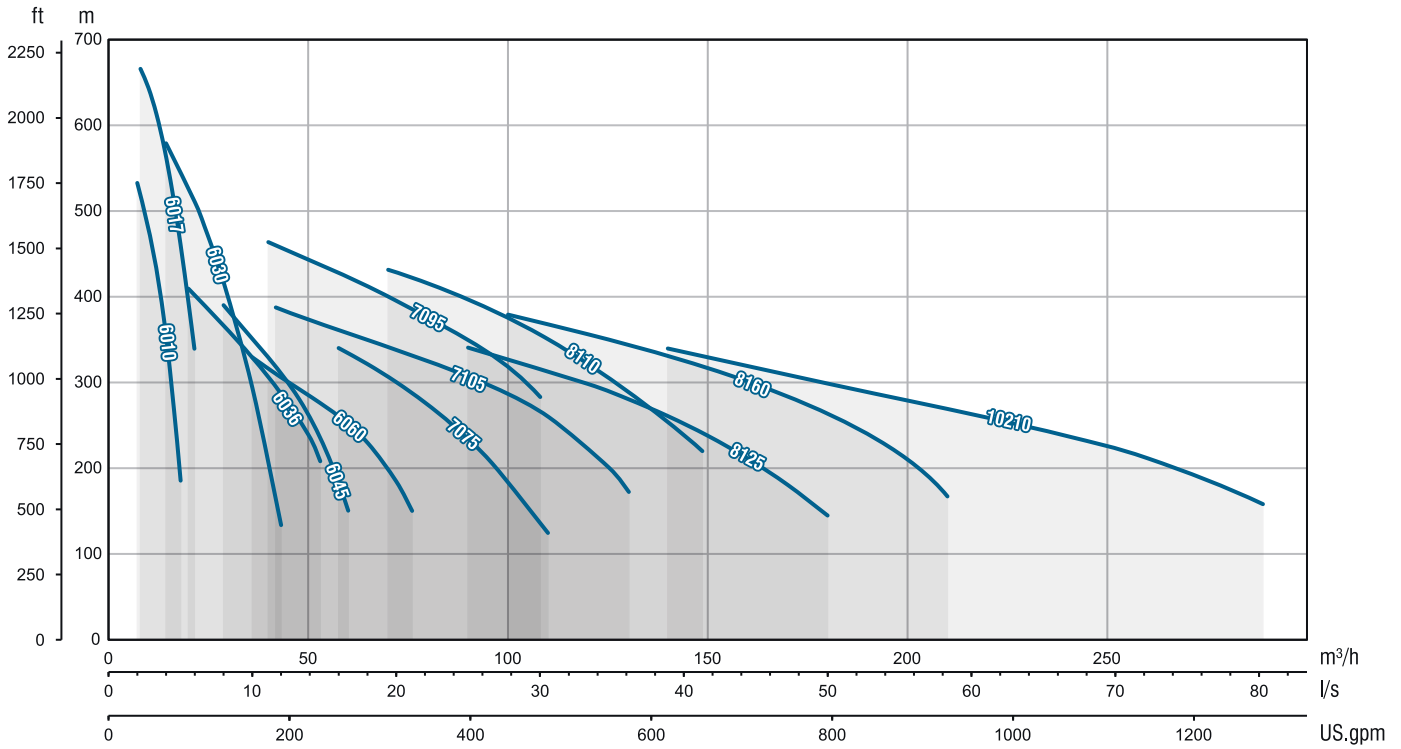
- Long life, high durability, high efficiency,
- Easy installation and service operation
- Suitable connection in NEMA standards
- Complete stainless steel (AISI304L - AISI316L)
- Maximum allowable sand content 50 g/m<sup>3</sup>
- NSF/ANSI/CAN 61 certified
- Hydrostatic pressure test (Optional)
- Tandem application (Optional)

### SPECIFICATIONS

Size	:	6" - 7" - 8" - 10"
Capacity	:	Up to 290 m <sup>3</sup> /h
Total Head	:	Up to 700 m
Direction of Rotation	:	CCW
Curve Tolerance	:	ISO9906:2012 2B
Min. Efficiency Index	:	MEI > 0.4



## PERFORMANCE CHART



## MATERIALS

PART NAME	AISI304 DESIGN	AISI316 DESIGN
DIFFUSER	AISI304L	AISI316L
IMPELLER	AISI304L	AISI316L
SHAFT	AISI431L	AISI316L, AISI1630
BEARING	EPDM, Bronze (ASTM B145-4A)	NBR



## Special Features

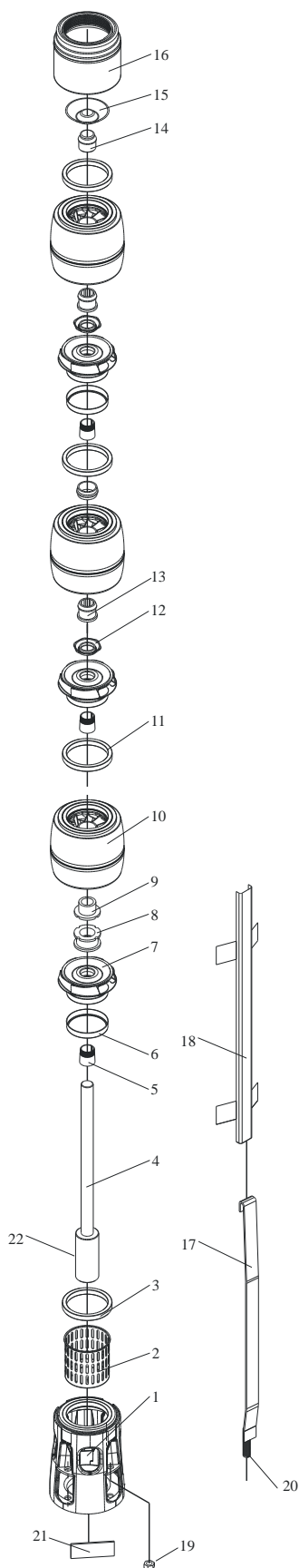


Hydrostatic Pressure Test App.



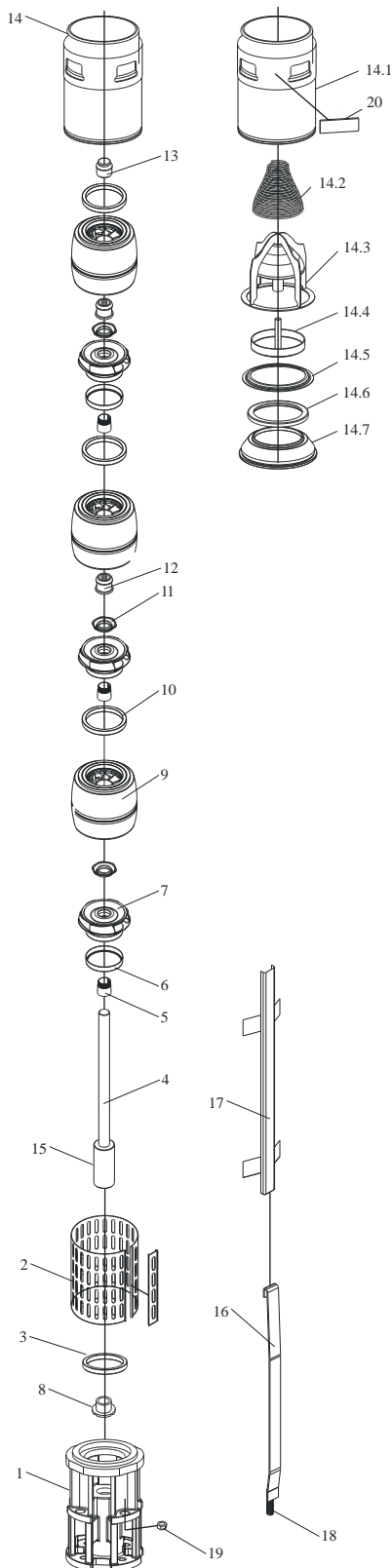
Tandem Application (PATENTED)

## PART AND MATERIALS (10...60 m<sup>3</sup>/h)



No	Part Name	Material
1	Suction Case	Stainless Steel (AISI 304L)
2	Strainer	Stainless Steel (AISI 304L)
3	Suction Case Wear Ring	Bronze (ASTM B145-4A) *AISI 304 + Rubber
4	Pump Shaft	Stainless Steel (AISI 431)
5	Collet	Stainless Steel (AISI 304)
6	Impeller Wear Ring	Stainless Steel (AISI 304L)
7	Impeller	Stainless Steel (AISI 304L)
8	Nut For Stop Ring	Stainless Steel (AISI 304)
9	Stop Ring	Bronze (ASTM B145-4A)
10	Diffuser	Stainless Steel (AISI 304L)
11	Diffuser Wear Ring	Rubber
12	Nut For Collet	Rubber
13	Rubber Bearing	Stainless Steel (AISI 304L)
14	Upper Bearing	Bronze (ASTM B145-4A)
15	Valve Cup	Stainless Steel (AISI 304L)
16	Discharge Case	Stainless Steel (AISI 304L)
17	Tie Rod	Stainless Steel (AISI 304L)
18	Cable Guard	Stainless Steel (AISI 304L)
19	Tie Rod Nut	Stainless Steel (AISI 304)
20	Tie Rod Stud	Stainless Steel (AISI 316)
21	Name Plate	Stainless Steel (AISI 304L)
22	Coupling	Stainless Steel (AISI 431)

## PART AND MATERIALS (75...215 m<sup>3</sup>/h)



No	Part Name	Material
1	Suction Case	Stainless Steel (AISI 304L)
2	Strainer	Stainless Steel (AISI 304L)
3	Suction Case Wear Ring	Rubber
4	Pump Shaft	Stainless Steel (AISI 431)
5	Collet	Stainless Steel (AISI 304)
6	Impeller Wear Ring	Stainless Steel (AISI 304L)
7	Impeller	Stainless Steel (AISI 304L)
8	Stop Ring	Bronze (ASTM B145-4A)
9	Diffuser	Stainless Steel (AISI 304L)
10	Diffuser Wear Ring	Rubber
11	Nut for Collet	Stainless Steel (AISI 304L)
12	Rubber Bearing	Rubber
13	Upper Bearing	Bronze (ASTM B145-4A)
14	Discharge Case	Stainless Steel (AISI 304L)
14.1	Discharge Case Body	Stainless Steel (AISI 304L)
14.2	Valve Cup Spring	Stainless Steel (AISI 304L)
14.3	Valve Cup Guide	Stainless Steel (AISI 304L)
14.4	Valve Cup	Stainless Steel (AISI 304L)
14.5	Upper Valve Cup Seat Retainer	Stainless Steel (AISI 304L)
14.6	Valve Cup Seat	Rubber
14.7	Lower Valve Cup Seat Retainer	Stainless Steel (AISI 304L)
15	Coupling	Stainless Steel (AISI 431)
16	Tie Rod	Stainless Steel (AISI 304L)
17	Cable Guard	Stainless Steel (AISI 304L)
18	Tie Rod Stud	Stainless Steel (AISI 316)
19	Tie Rod Nut	Stainless Steel (AISI 304L)
20	Name Plate	Stainless Steel (AISI 304L)

\* Dimensional details are provided for reference only. \* All specifications are subject to change without prior notice.



**EBARA Pumps Malaysia Sdn Bhd**  
 6, Jalan TP3, UEP Subang Jaya Industrial Park,  
 47620 Subang Jaya, Selangor, Malaysia.  
 Tel : 03-8023 6622 Fax : 03-8023 9355  
 Email : sales.epm@ebara.com  
 Website : www.ebara.com.my



Authorised dealer: