



EBARA

4" SUBMERSIBLE MOTORS

Type BSM



Ahead Beyond

FEATURES

- Standard voltage 380/460V – 50/60Hz (Allowable voltage tolerance $\pm 10\%$)
- High efficiency provides operation cost savings
- Oil coolant system
- Flange with NEMA standards
- Stainless steel shaft
- Max. ambient water temperature 30° C
- CW & CCW direction of rotation
- Our motors can be operated horizontally in pools and wells which are not deep enough



Rotor & Shaft

The "Rotor" & "Shaft" parts are made of stainless steel.



Membrane

The membrane minimizes expansion pressure caused by heating.



Upper Bearing

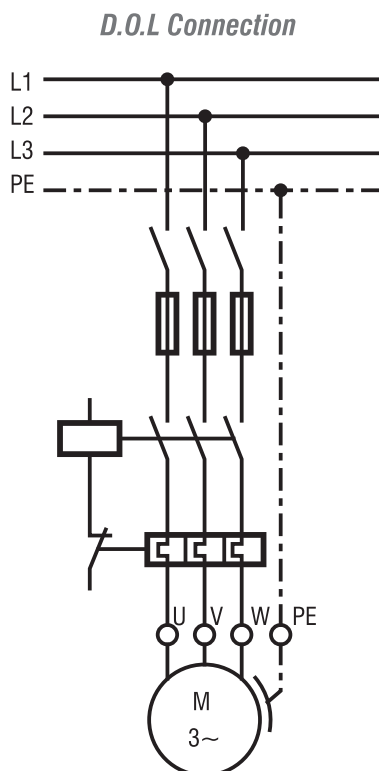
Upper bearing body of motor is made of cast iron.



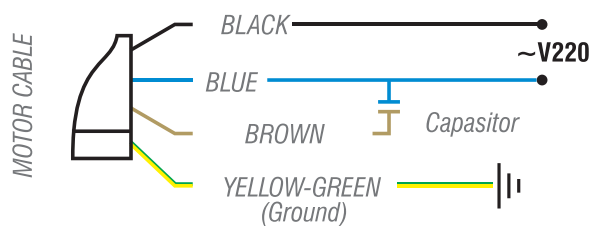
Mechanical Seal

Mechanical Seal prevent sand and other particles to get in motor, provide long bearing life.

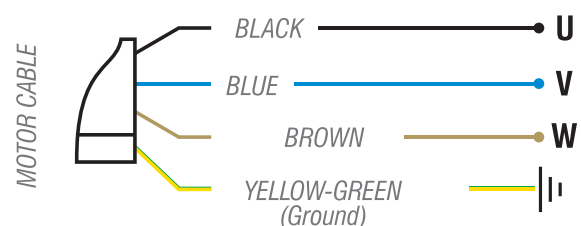
Energy Connection



Single-phase Wiring Diagram



Three-phase Wiring Diagram



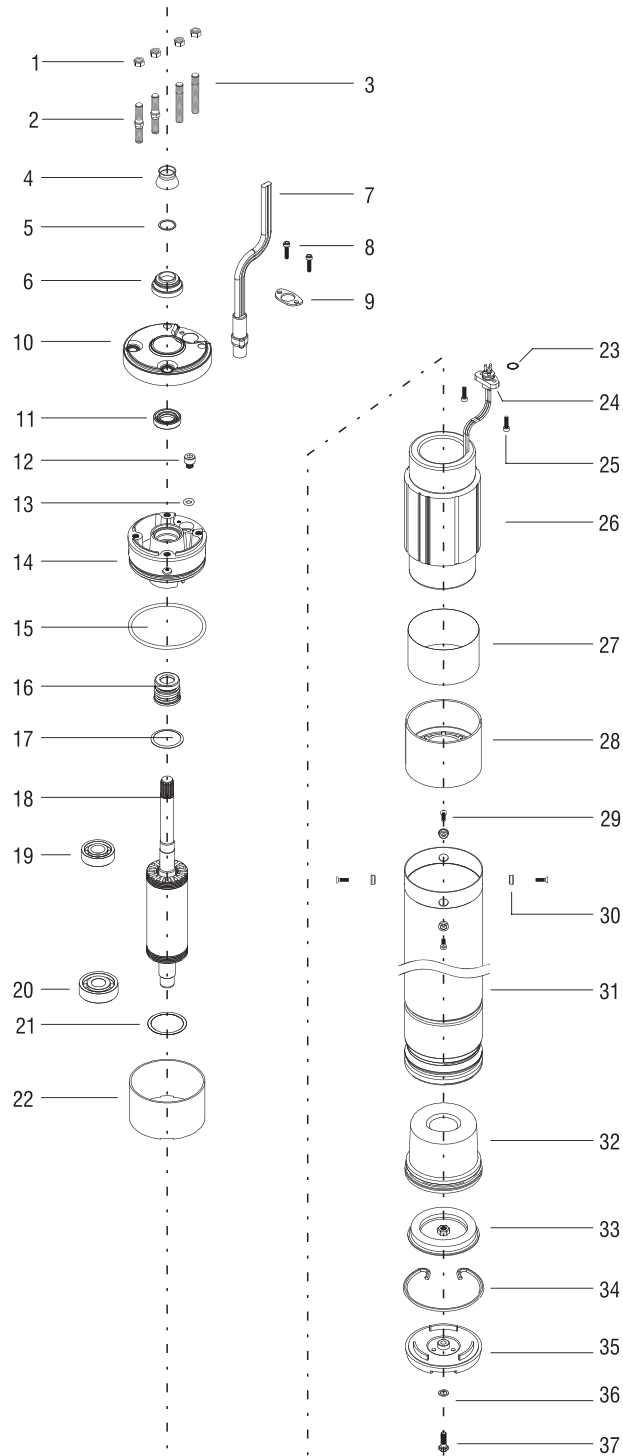
PRODUCT CODE

BSM OF 4 / 3 M

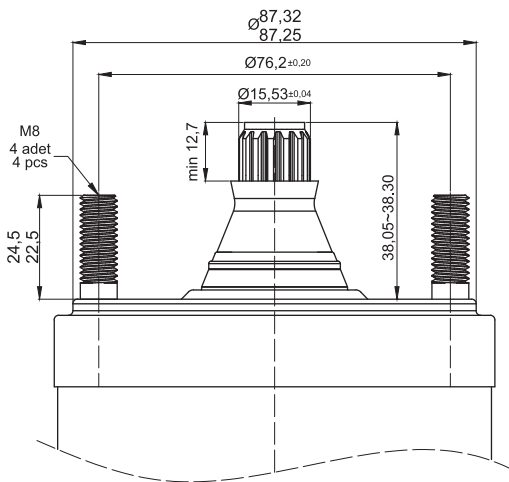
- Phase type (M: 1ph, T: 3ph)
- Motor Power (HP)
- Nominal Diameter(4: 4 inch)
- Cooling (OF: Oil Filled, ENC: Encapsulated)
- Product type

TECHNICAL DRAWING

No	Part Name	Material
1	Nut	Inox
2	Hexagon Stud	Inox
3	Stud	Inox
4	Sand Slinger	Rubber
5	Washer	Stainless Steel
6	Sand Slinger Base	Plastic
7	Connector and Cable	Rubber and AISI 304
8	Connection Cable Screw	Inox
9	Lead Clamp Plate	Stainless Steel
10	Top End Bell cover	Stainless Steel
11	Seal	Rubber
12	Oil Fill Plug	Inox
13	O-ring	Rubber
14	Upper Bearing Body	Cast Iron
15	Upper Bearing a-Ring	Rubber
16	Mechanical Seal	Steel
17	Wavy Spring	Spring Steel
18	Rotor with Shaft	Steel Sheet
19	Upper Ball Bearing	Steel
20	Lower Ball Bearing	Steel
21	Washer	Stainless Steel
22	Insulation Roll Up	Plastic
23	O-Ring	Rubber
24	Socket	Plastic
25	Connector Cable Screw	Inox
26	Rotor with Shaft	Steel Sheet
27	Insulation Roll Up	Plastic
28	Bottom End Bell	Aluminium
29	Lock screw	Inox
30	Lock Nut	Inox
31	Motor Outer Shell	Stainless Steel
32	Membrane	Rubber
33	Membrane Cover	Stainless Steel
34	Snap Ring	Spring Steel
35	Shell Protector	Plastic
36	Shell Protector Washer	Steel
37	Shell Protector Bolt	Inox



DIMENSIONS, WEIGHTS AND CABLE DATA



Single-Phase Cable Data

Type	Power		Cable Ø cm	Length m
	kW	HP		
BSM 04/0.5 M	0,37	0,55	3 x 1,5 + 1,5	2
BSM 04/0.75 M	0,55	0,75	3 x 1,5 + 1,5	2
BSM 04/1 M	0,75	1,0	3 x 1,5 + 1,5	2
BSM 04/1.5 M	1,1	1,5	3 x 1,5 + 1,5	2
BSM 04/2 M	1,5	2,0	3 x 1,5 + 1,5	2
BSM 04/3 M	2,2	3,0	3 x 1,5 + 1,5	2
BSM 04/4 M	3,0	4,0	3 x 2,5 + 2,5	2,5
BSM 04/5.5 M	4,0	5,5	3 x 2,5 + 2,5	2,5

Three-Phase Cable Data

Type	Power		Cable Ø cm	Length m
	kW	HP		
BSM 04/0.5 T	0,37	0,55	3 x 1,5 + 1,5	2
BSM 04/0.75 T	0,55	0,75	3 x 1,5 + 1,5	2
BSM 04/1 T	0,75	1,0	3 x 1,5 + 1,5	2
BSM 04/1.5 T	1,1	1,5	3 x 1,5 + 1,5	2
BSM 04/2 T	1,5	2,0	3 x 1,5 + 1,5	2
BSM 04/3 T	2,2	3,0	3 x 1,5 + 1,5	2
BSM 04/4 T	3,0	4,0	3 x 1,5 + 1,5	2,5
BSM 04/5.5 T	4,0	5,5	3 x 1,5 + 1,5	2,5
BSM 04/7.5 T	5,5	7,5	3 x 2,5 + 2,5	2,5
BSM 04/10 T	7,5	10	3 x 2,5 + 2,5	2,5

4" Single-Phase

Type	Power		Voltage V	Frequency Hz	Thrust Load N	Length mm	Weight Kg
	kW	HP					
BSM 04/0.5 M	0,37	0,55	220	50	2500	360	9,0
BSM 04/0.75 M	0,55	0,75	220	50	2500	380	9,5
BSM 04/1 M	0,75	1,0	220	50	2500	400	10,5
BSM 04/1.5 M	1,10	1,5	220	50	2500	440	12,5
BSM 04/2 M	1,5	2,0	220	50	2500	470	14,0
BSM 04/3 M	2,20	3,0	220	50	2500	560	18,5
BSM 04/4 M	3,0	4,0	220	50	4500	654	23,0
BSM 04/5.5 M	4,00	5,5	220	50	4500	724	26,0

4" Three-Phase

Type	Power		Voltage V	Frequency Hz	Thrust Load N	Length mm	Weight Kg
	kW	HP					
BSM 04/0.5 T	0,37	0,55	380	50	2500	345	8,5
BSM 04/0.75 T	0,55	0,75	380	50	2500	360	9,0
BSM 04/1 T	0,75	1,0	380	50	2500	380	9,5
BSM 04/1.5 T	1,1	1,5	380	50	2500	400	10,5
BSM 04/2 T	1,5	2,0	380	50	2500	440	12,5
BSM 04/3 T	2,20	3,0	380	50	2500	470	14
BSM 04/ 4T	3,0	4,0	380	50	4500	529	16,5
BSM 04/5.5 T	4,0	5,5	380	50	4500	599	20,0
BSM 04/7.5 T	5,5	7,5	380	50	4500	654	23,0
BSM 04/10 T	7,5	10	380	50	4500	794	29,5

* Dimensional details are provided for reference only.

* All specifications are subject to change without prior notice.



EBARA Pumps Malaysia Sdn Bhd
 6, Jalan TP3, UEP Subang Jaya Industrial Park,
 47620 Subang Jaya, Selangor, Malaysia.
 Tel : 03-8023 6622 Fax : 03-8023 9355
 Email : sales.epm@ebara.com
 Website : www.ebara.com.my



Authorised dealer: