



Deep Well Submersible Pump

Type 3" Borehole Pump

APPLICATIONS

- For water supply from wells or reservoirs.
- For domestic use.
- For civil and industrial applications
- For garden use and irrigation.

TECHNICAL DATA

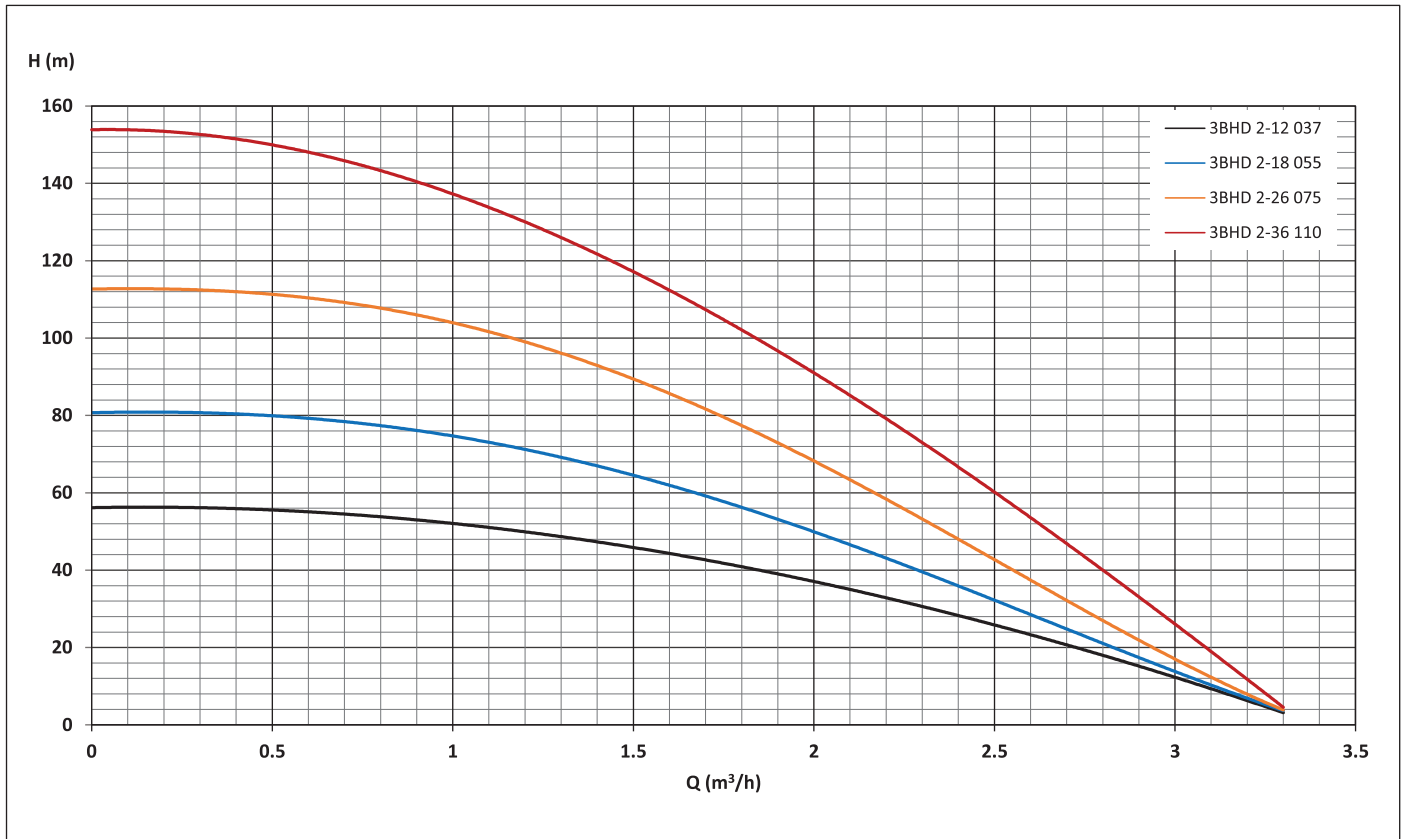
- Adopted the NEMA standard
- Insulation class: B
- Protection grade: IP 68
- Highest temperature of liquid: 35°C
- Speed: 2850rpm
- Minimum well diameter: 3"

MOTOR & PUMP

- Rewindable motor
- Single-phase : 220 - 240V/50Hz
- Equip with starter control box

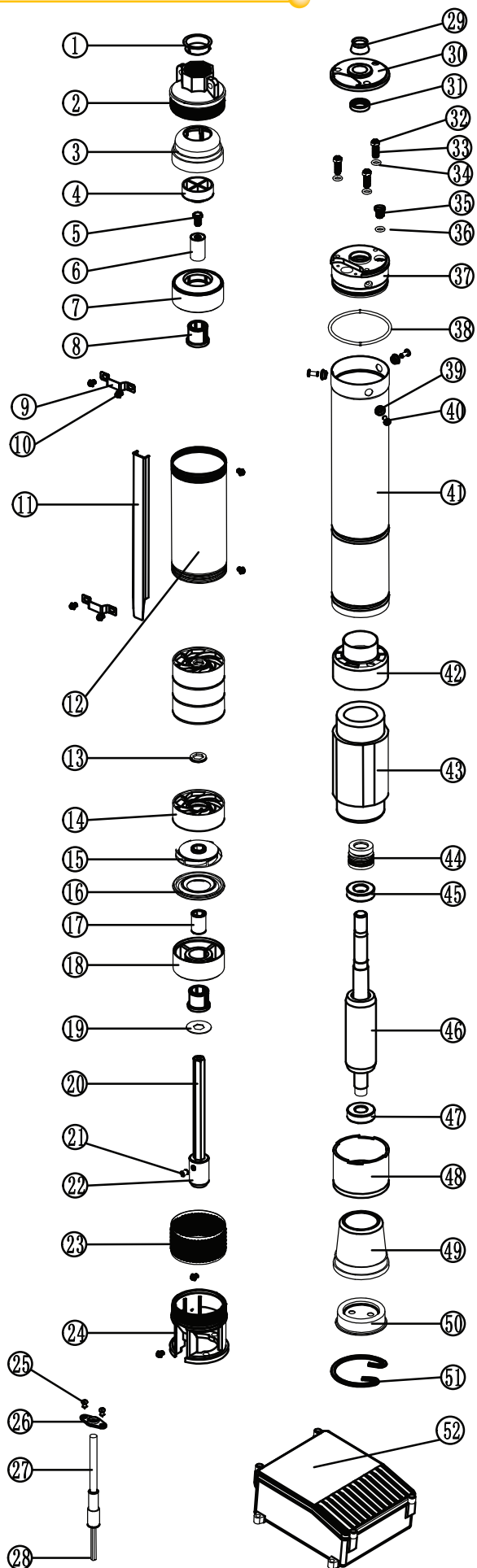


PERFORMANCE CHART



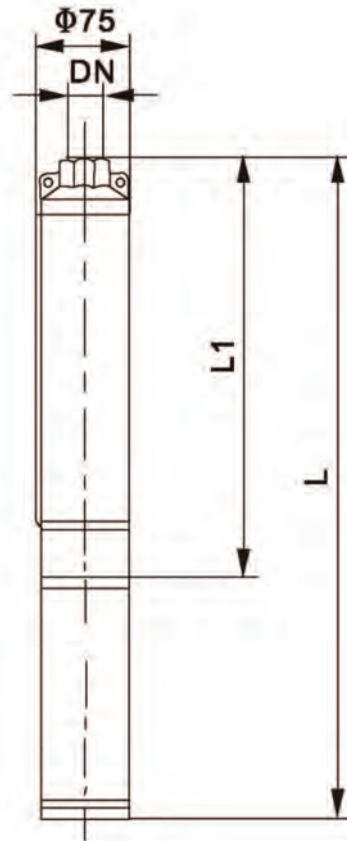
Pump Type Single-Phase 240V 50Hz	Power		Current A	m ³ /h	Q = Capacity							
	kW	HP			0	0.5	1	1.5	2	2.5	3	3.3
	H = Total Head											
3BHD 2-12 037	0.37	0.5	4.0	m	56.2	55.5	52.0	46.0	37.0	26.0	12.0	3.3
3BHD 2-18 055	0.55	0.75	5.6	m	80.7	80.0	74.5	64.7	50.0	32.0	14.0	3.6
3BHD 2-26 075	0.75	1.0	7.5	m	112.8	111.0	104.0	90.0	68.0	42.0	18.0	3.4
3BHD 2-36 110	1.1	1.5	11.8	m	153.7	150.0	138.0	117.0	90.0	60.0	28.0	3.4

SECTIONAL VIEW



Serial	Name	Material	Qty
1	Anti-dust cover	PP	1
2	Outlet	Cu	1
3	Valve seat	ABS	1
4	Valve	ABS	1
5	Screw	SUS304	1
6	Bearing bush	SUS304	1
7	Upper Support	ABS	1
8	Guide bush	NBR	3
9	Holder pipe	SUS304	2
10	Screw	SUS304	8
11	Cable cover	SUS304	1
12	Pump housing	SUS304	1
13	Seal gasket	PE	-
14	Diffuser	PC	-
15	Impeller	POM	-
16	Diffuser cover	PC	-
17	Bearing bush	SUS304	3
18	Lower Support	ABS	3
19	Shield gasket	SUS304	1
20	Pump Shaft	SUS304	1
21	Fixed Screw	SUS304	1
22	Coupling	SUS304	1
23	Strainer	SUS304	1
24	Suction Support	Cu	1
25	Screw	SUS304	2
26	Cover plate	SUS304	1
27	Cable 3 wirs+Earthed	PVC	1
28	Heat shrink tube	PET	3
29	Sand proof cap	NBR	1
30	Stainless Steel Cover	SUS304	1
31	Static Seal	NBR	1
32	Nut	SUS304	3
33	Stud	SUS304	3
34	Spring Water	SUS304	3
35	Screw	SUS304	1
36	O-ring	NBR	1
37	Oil chamber	HT200	1
38	O-ring	NBR	1
39	Locking ring	SUS304	3
40	Screw	SUS304	3
41	Motor housing	SUS304	1
42	Plastic cover	PP	1
43	Stator	50w800	1
44	Mechanical seal	SiC/Ceramics	1
45	Bearing	6003	1
46	Rotor	50W800	1
47	Bearing	6202	1
48	Bearing Seat	HT200	1
49	Rubber cup	NBR	1
50	End cover	SUS304	1
51	Clamp spring	SUS304	1
52	KA control box	-	1

DIMENSION



MODEL	DN(mm)	L1(mm)	L(mm)	WEIGHT (kg)
3BHD 2-12 037	25	455	790	8.2
3BHD 2-18 055	25	615	1000	10.3
3BHD 2-26 075	25	795	1210	12.2
3BHD 2-36 110	25	1045	1520	14.5

* Dimensional details are provided for reference only.
 * All specifications are subject to change without prior notice.



EBARA Pumps Malaysia Sdn Bhd
 6, Jalan TP3, UEP Subang Jaya Industrial Park,
 47620 Subang Jaya, Selangor, Malaysia.
 Tel : 03-8023 6622 Fax : 03-8023 9355
 Email : sales.epm@ebara.com
 Website : www.ebara.com.my



Authorised dealer: